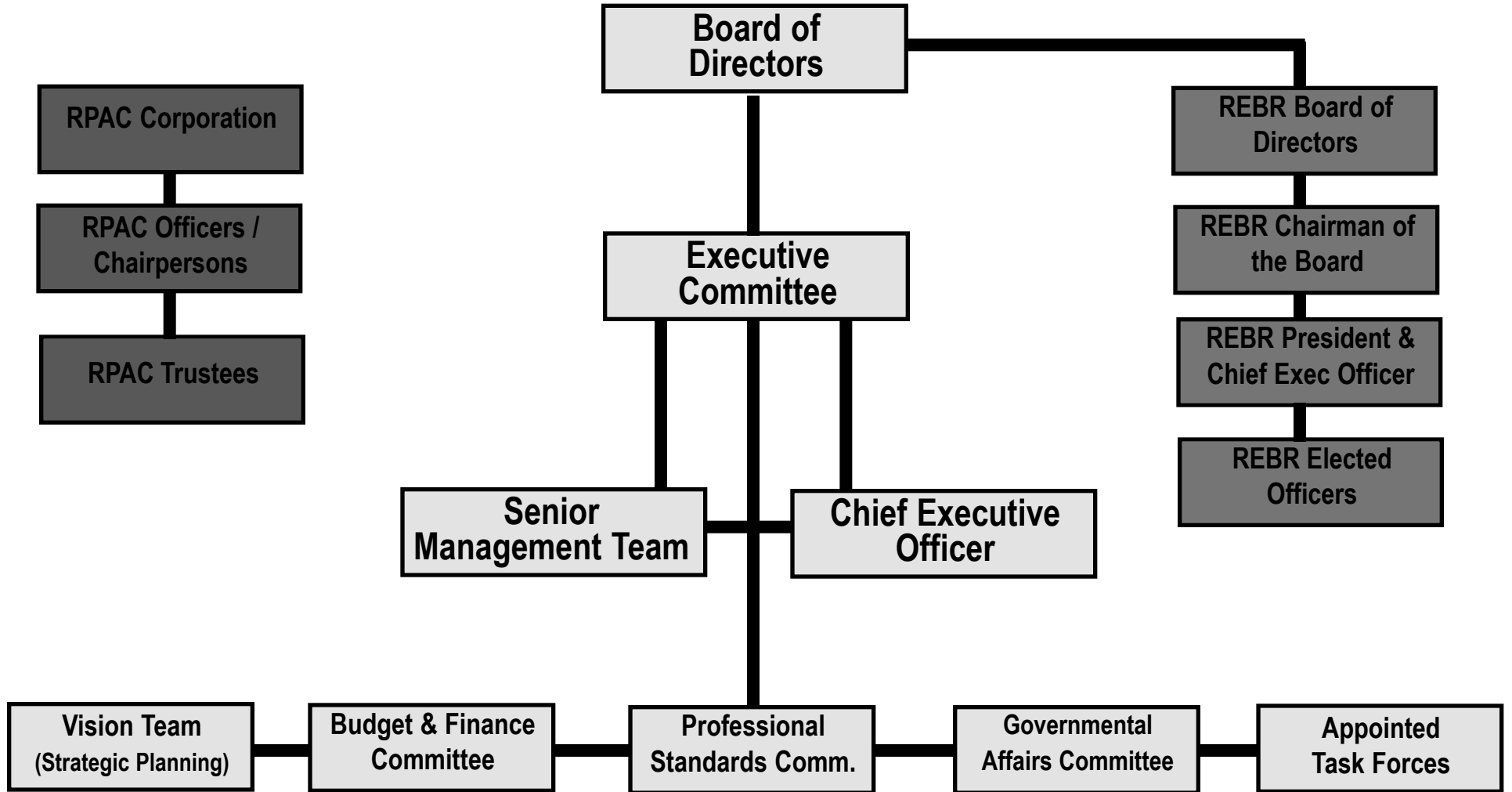
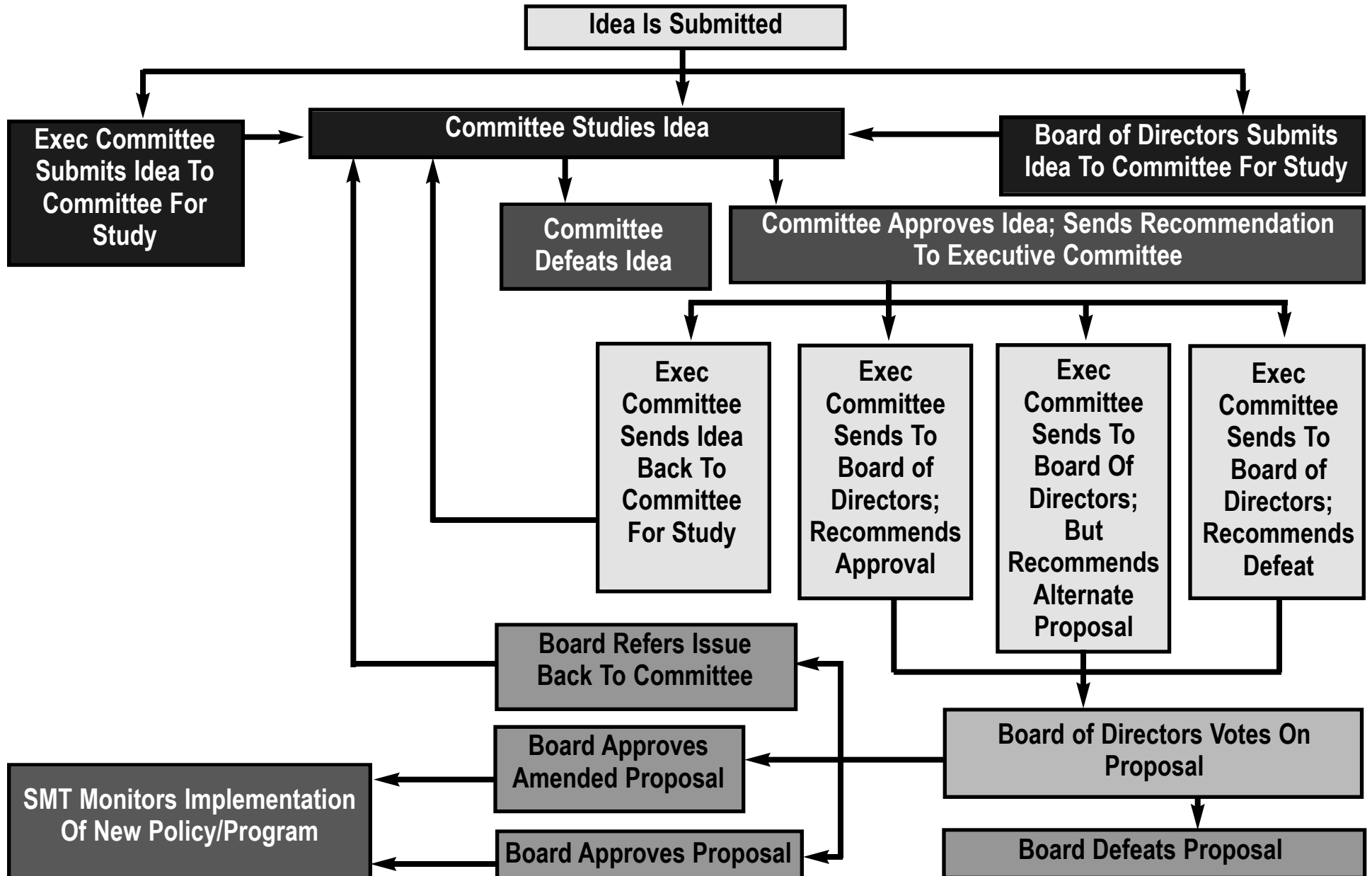




Kansas Association of REALTORS®





How Association Policy Is Made

Committee

A committee is charged with reviewing issues under its purview. The committee may do any of the following:

- * Request additional study on an issue.
- * Defeat a recommendation.
- * Approve a recommendation to be forwarded to the Executive Committee and the Board of Directors for consideration.

Senior Management Team (SMT)

The Senior Management Team consists of the President, President-Elect, Immediate Past President, 1st Vice President and KAR Chief Executive Officer. The SMT may do any of the following:

- * Request study on an issue or recommend additional study on an issue.
- * Monitor the implementation of policies and procedures approved by the Board of Directors.
- * Recommend approval or defeat of issues to the Executive Committee or Board of Directors.

Executive Committee

The Executive Committee is charged with considering all recommendations brought forward by KAR Committees. The Executive Committee may do any of the following:

- * Recommend referral of an issue back to the committee for further study.
- * Recommend defeat of a recommendation.
- * Recommend approval of a recommendation to be forwarded to the Board of Directors for consideration.
- * Recommend approval of an alternate recommendation to be forwarded to the Board of Directors for consideration.

Board of Directors

The Board of Directors is charged with considering all recommendations brought forward by a Committee and considered by the Executive Committee. The Directors may do any of the following:

- * Refer the issue back to the committee for further study.
- * Defeat a recommendation.
- * Approve a recommendation.
- * Approve an alternate recommendation of the Executive Committee.
- * Approve an alternate recommendation as amended by the Board of Directors.