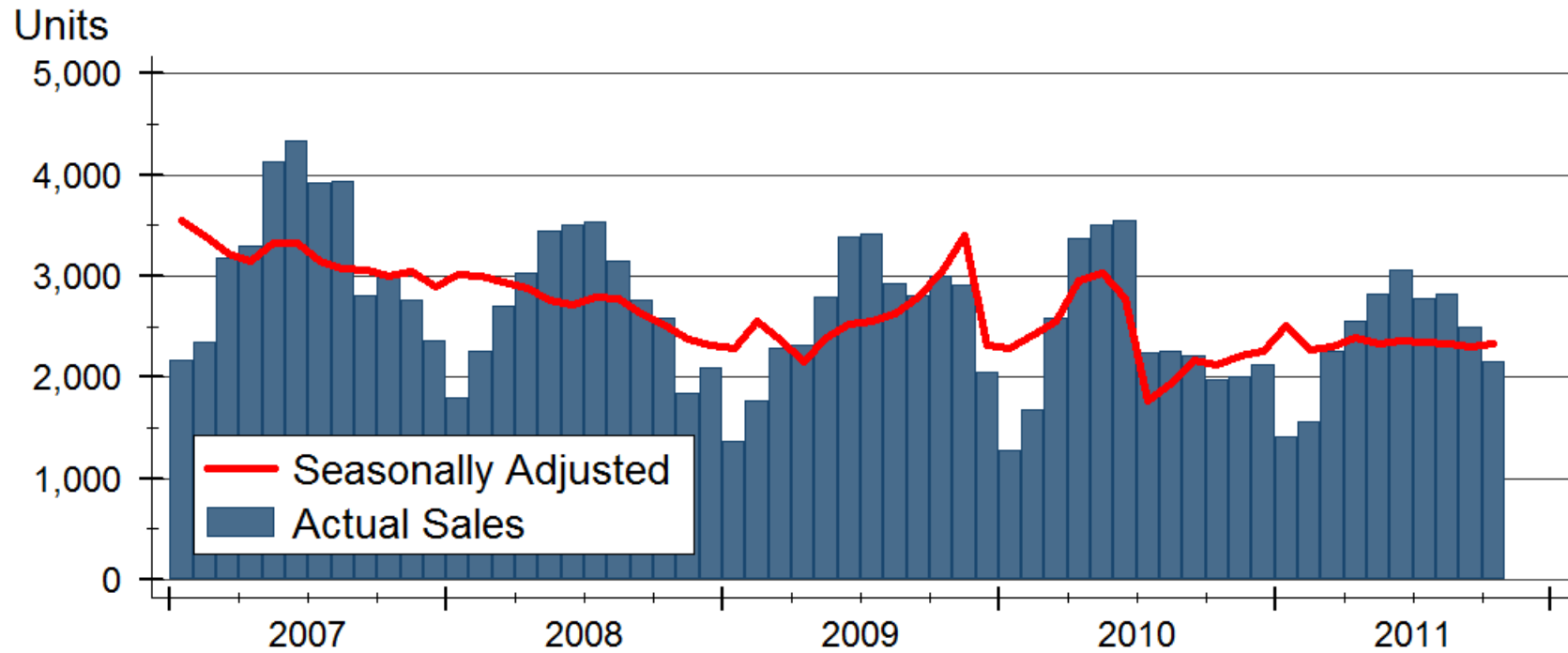


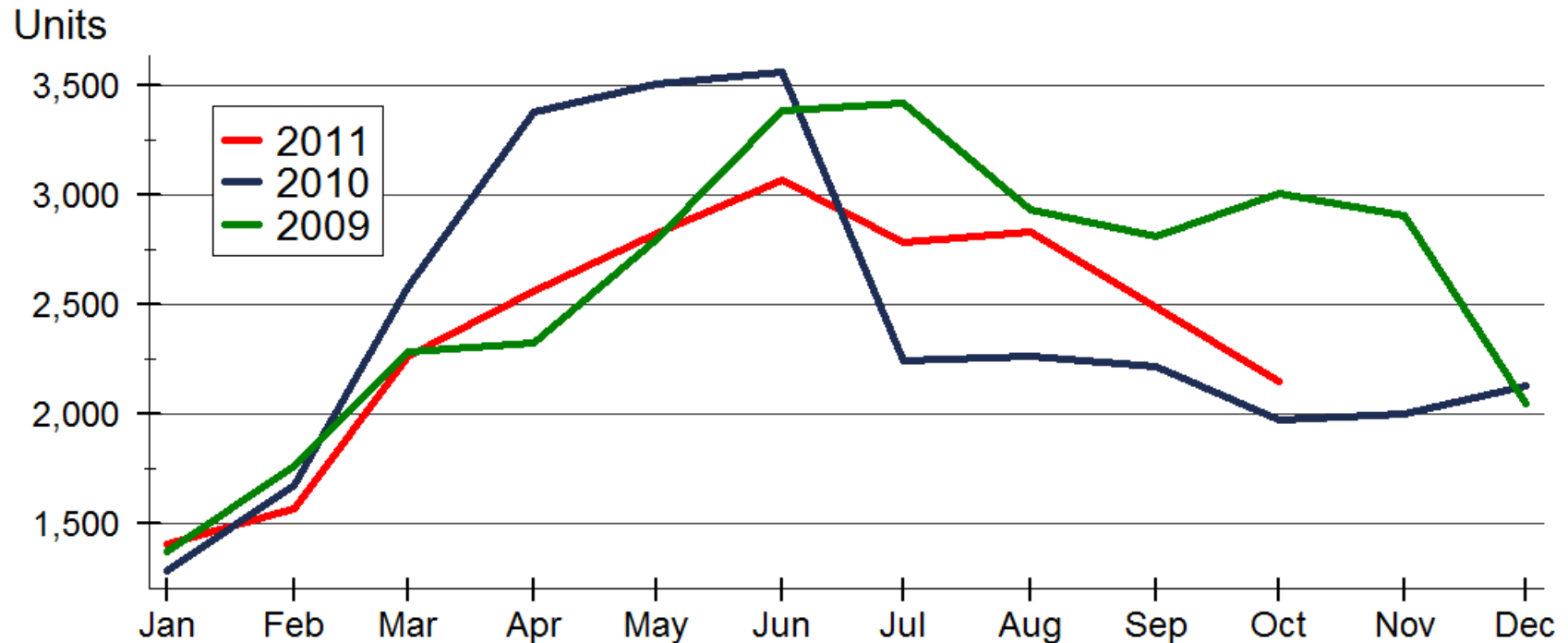
# Kansas Total Home Sales



Source: Participating Kansas REALTOR® MLS systems

Prepared for the Kansas Association of REALTORS® by WSU Center for Real Estate on 11/21/2011

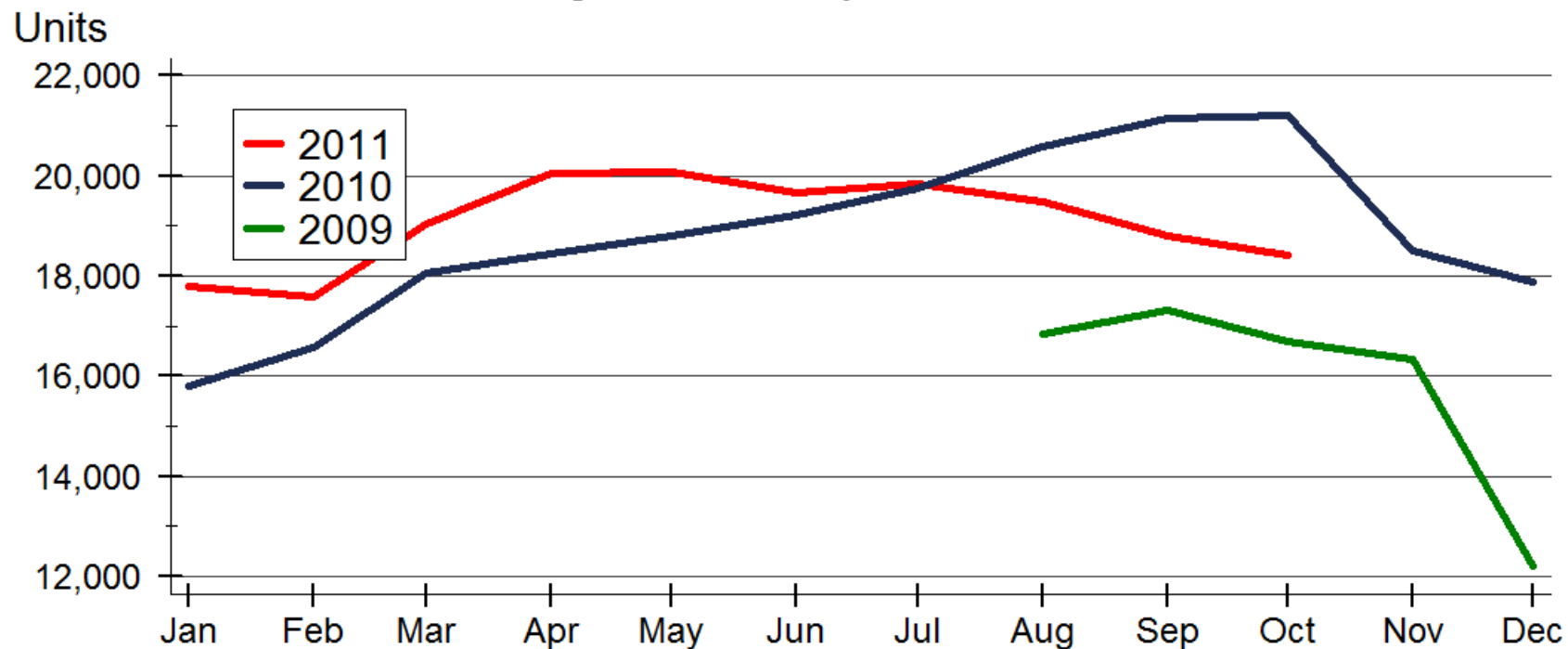
### Total Home Sales in Kansas by Month



Source: Participating Kansas REALTOR® MLS systems

Prepared for the Kansas Association of REALTORS® by WSU Center for Real Estate on 11/21/2011

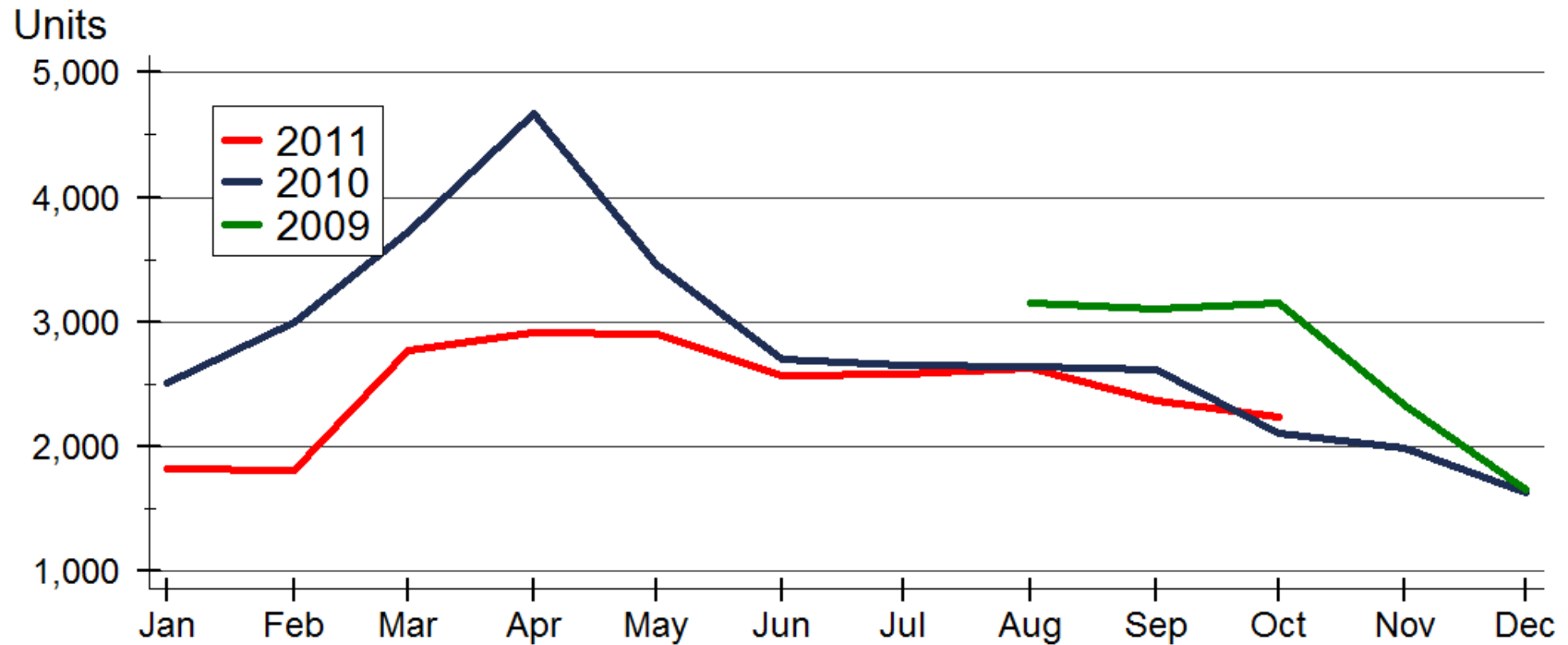
### Active Listings in Kansas by Month - All Homes



Source: Participating Kansas REALTOR® MLS systems

Prepared for the Kansas Association of REALTORS® by WSU Center for Real Estate on 11/21/2011

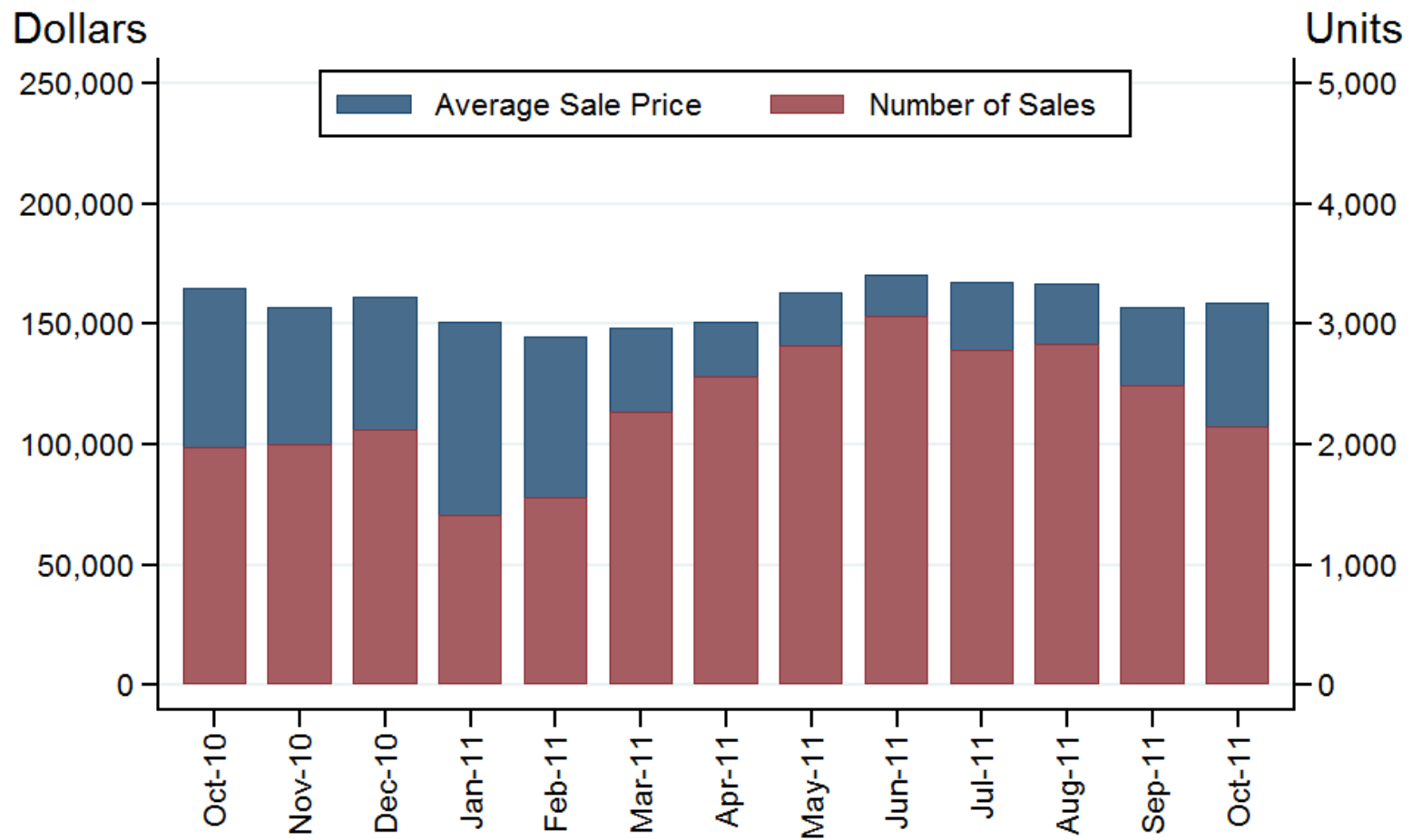
### Pending Home Sales in Kansas by Month - All Homes



Source: Participating Kansas REALTOR® MLS systems

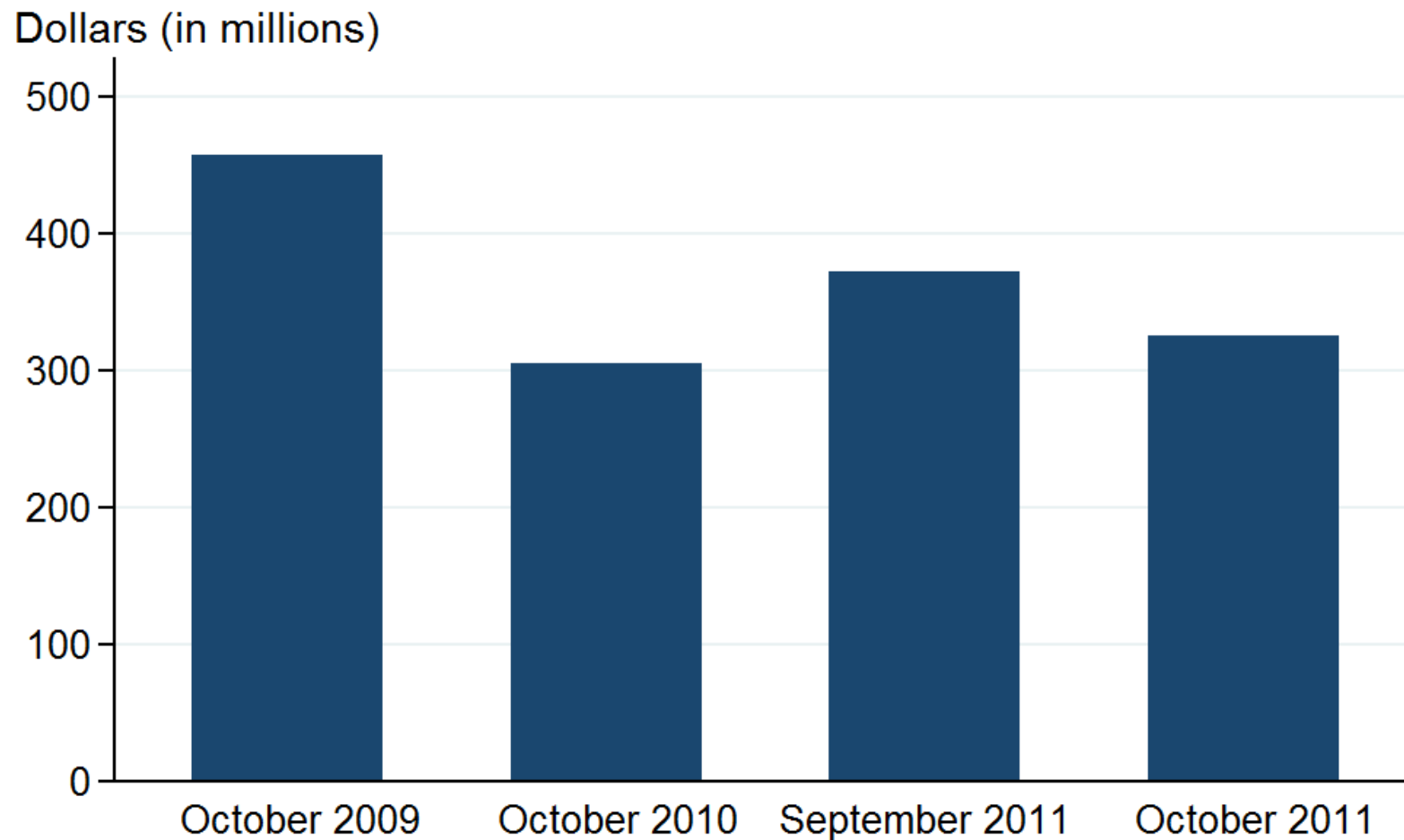
Prepared for the Kansas Association of REALTORS® by WSU Center for Real Estate on 11/21/2011

## Kansas Home Sales Activity October 2011



Sources: Participating Kansas REALTOR® MLS systems  
 Prepared for the Kansas Association of REALTORS® by WSU Center for Real Estate on 11/21/2011

## Kansas Home Sales Activity Volume in Millions

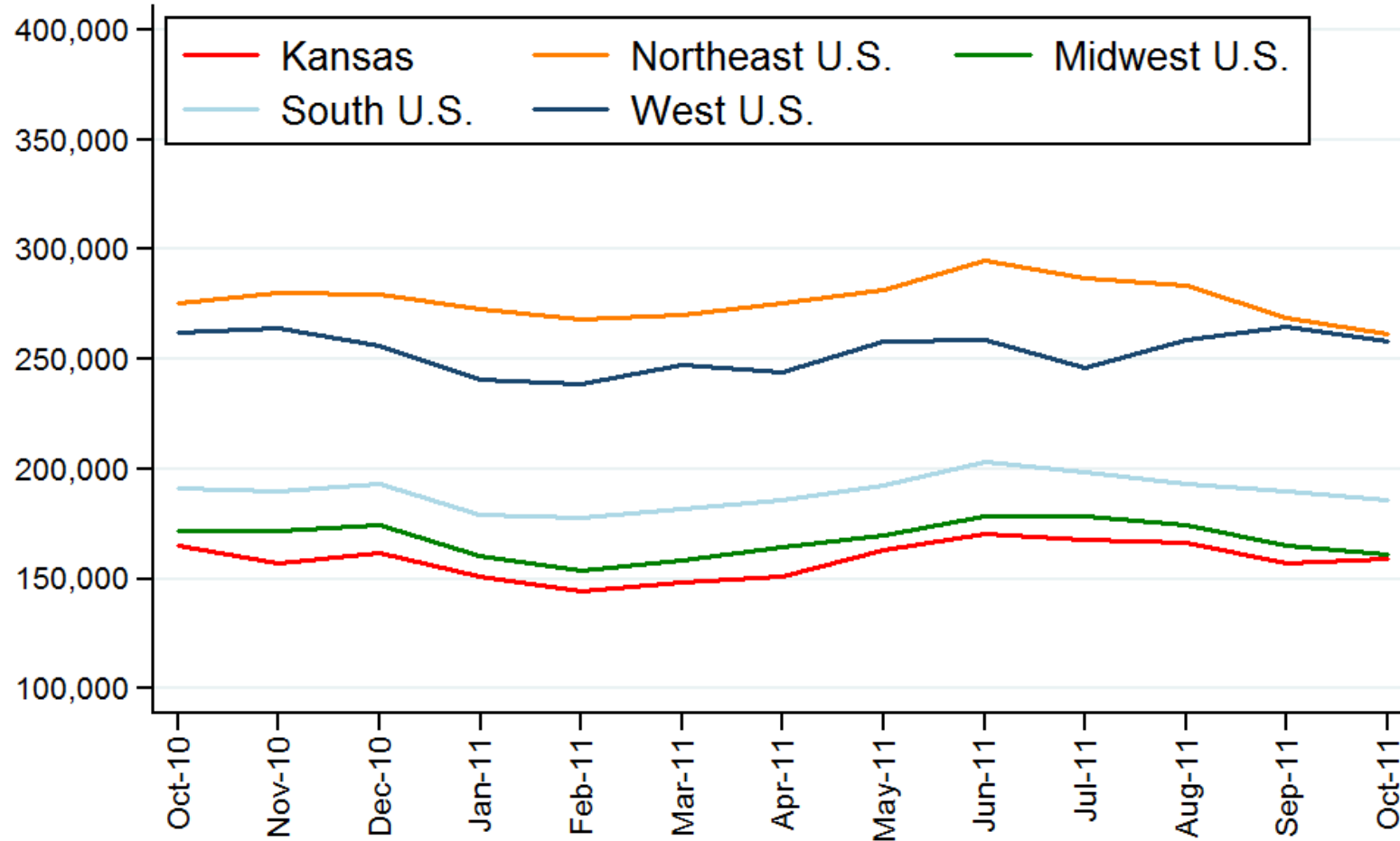


Sources: Participating Kansas REALTOR® MLS systems

Prepared for the Kansas Association of REALTORS® by WSU Center for Real Estate on 11/21/2011

# Average Sale Price of Homes Sold through October 2011

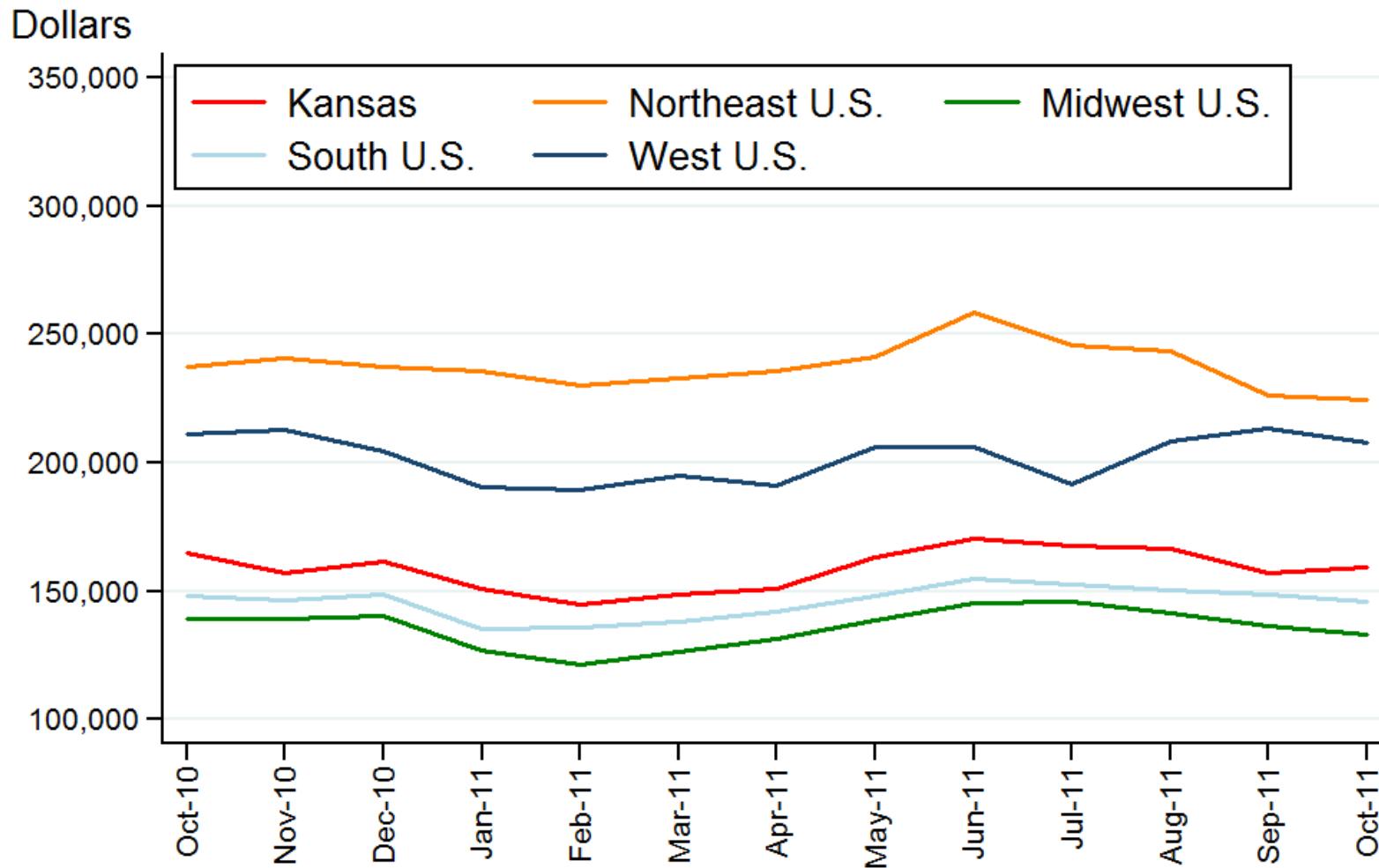
Dollars



Sources: NAR and participating Kansas REALTOR® MLS systems

Prepared for the Kansas Association of REALTORS® by WSU Center for Real Estate on 11/21/2011

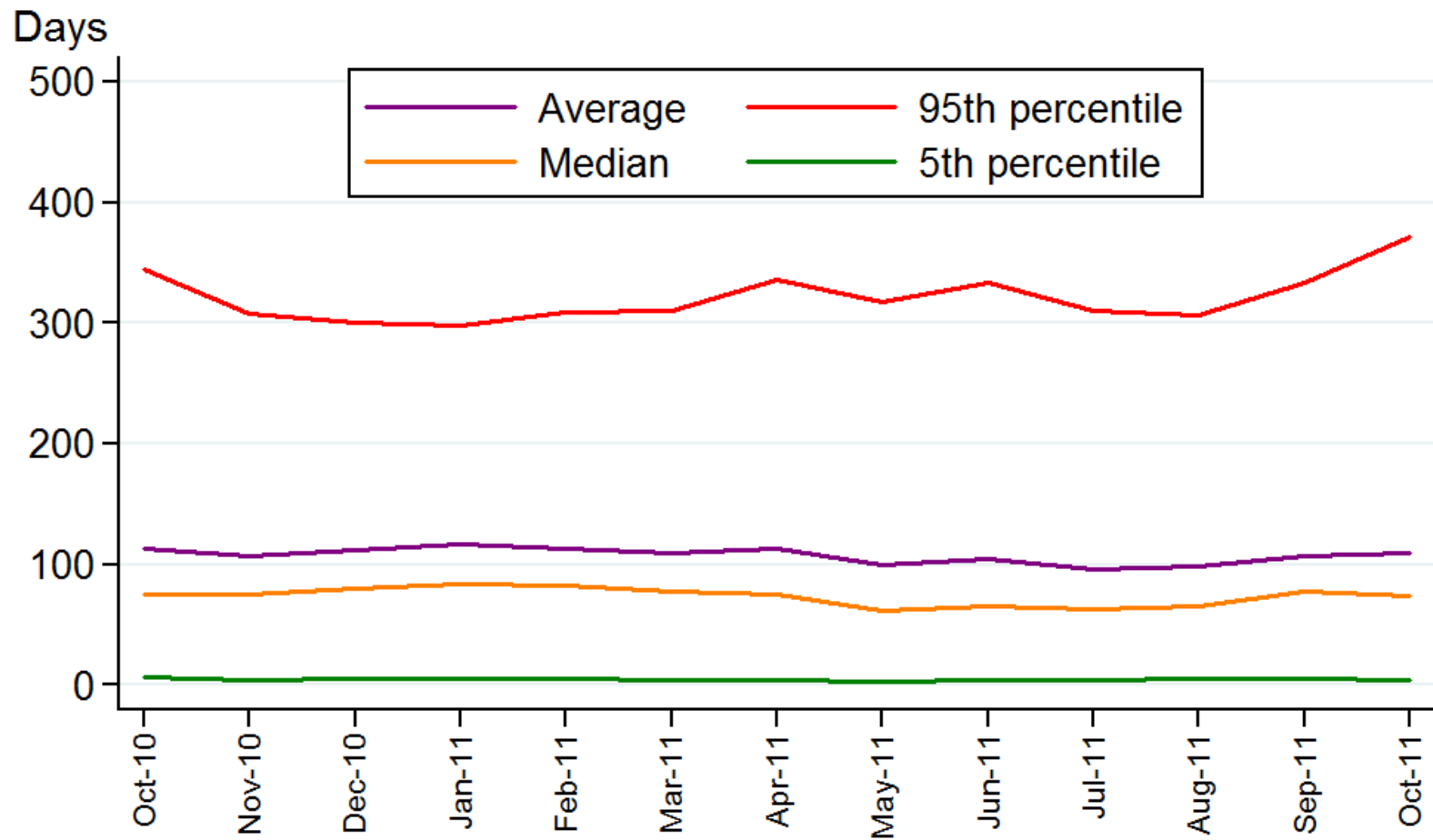
# Median Sale Price of Homes Sold through October 2011



Sources: NAR and participating Kansas REALTOR® MLS systems

Prepared for the Kansas Association of REALTORS® by WSU Center for Real Estate on 11/21/2011

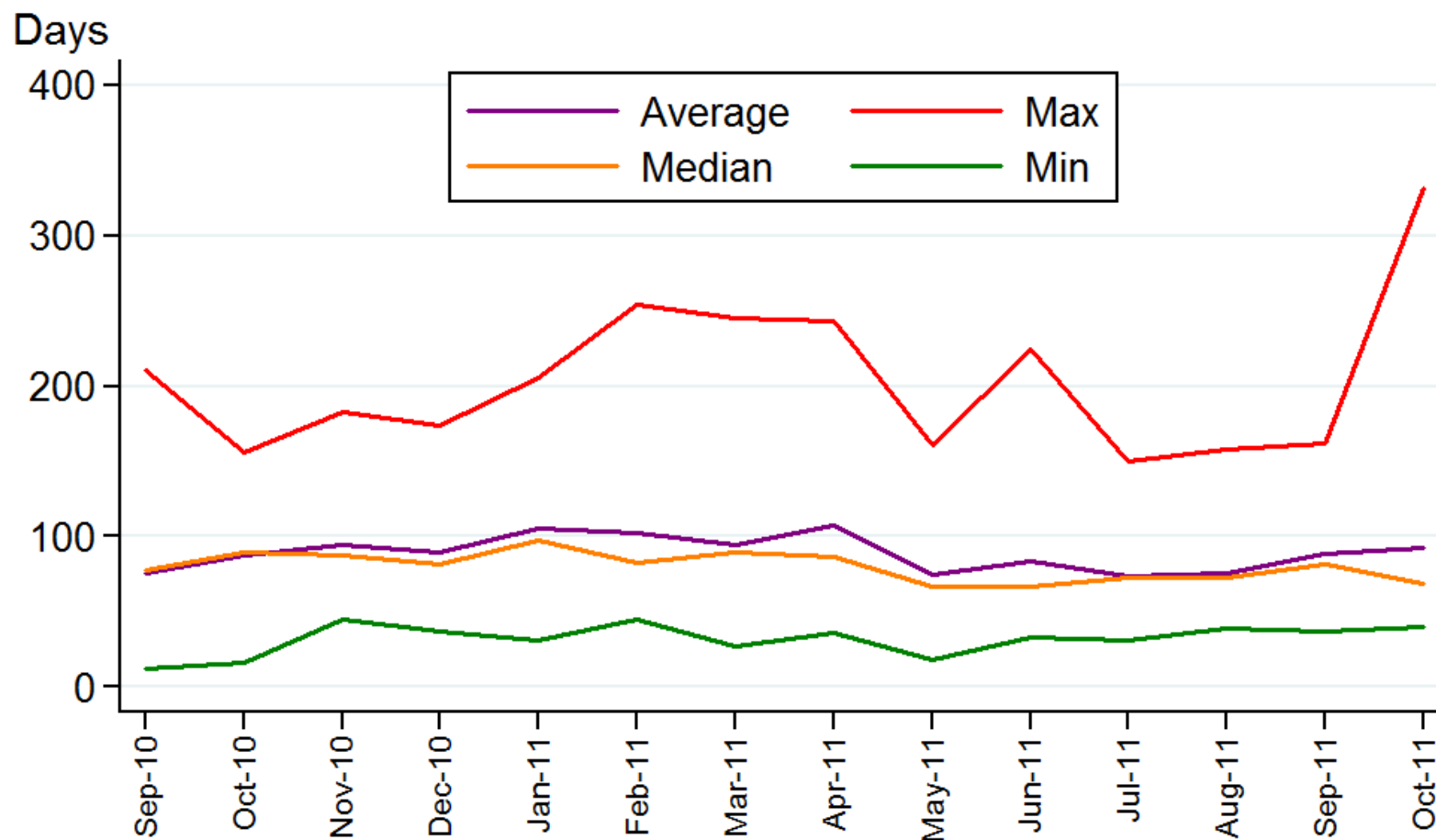
## Kansas Home Sales Days on the Market



Sources: Participating Kansas REALTOR® MLS systems

Prepared for the Kansas Association of REALTORS® by WSU Center for Real Estate on 11/21/2011

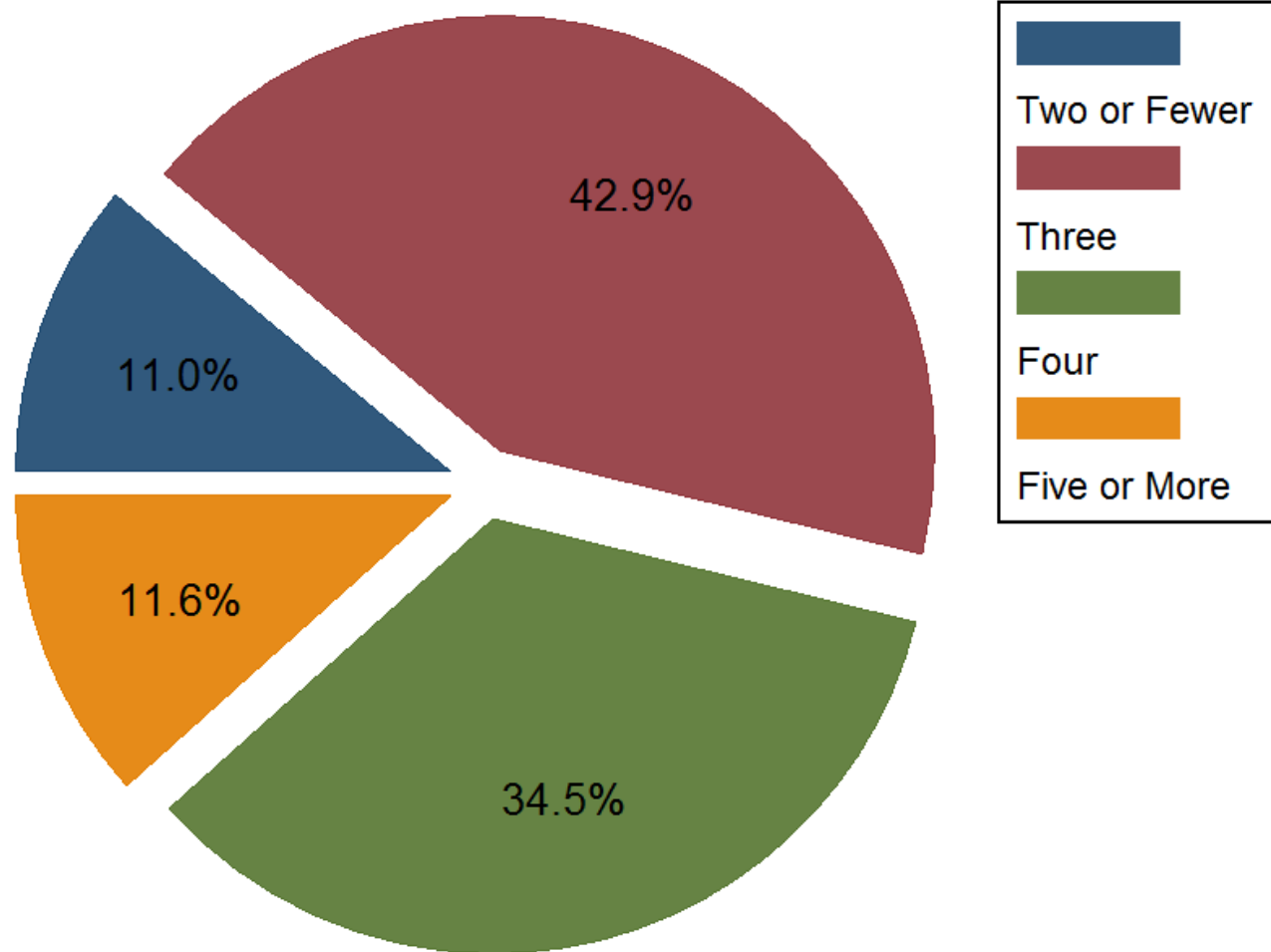
## Kansas Home Sales Median Days on Market across MLS Systems



Sources: Participating Kansas REALTOR® MLS systems

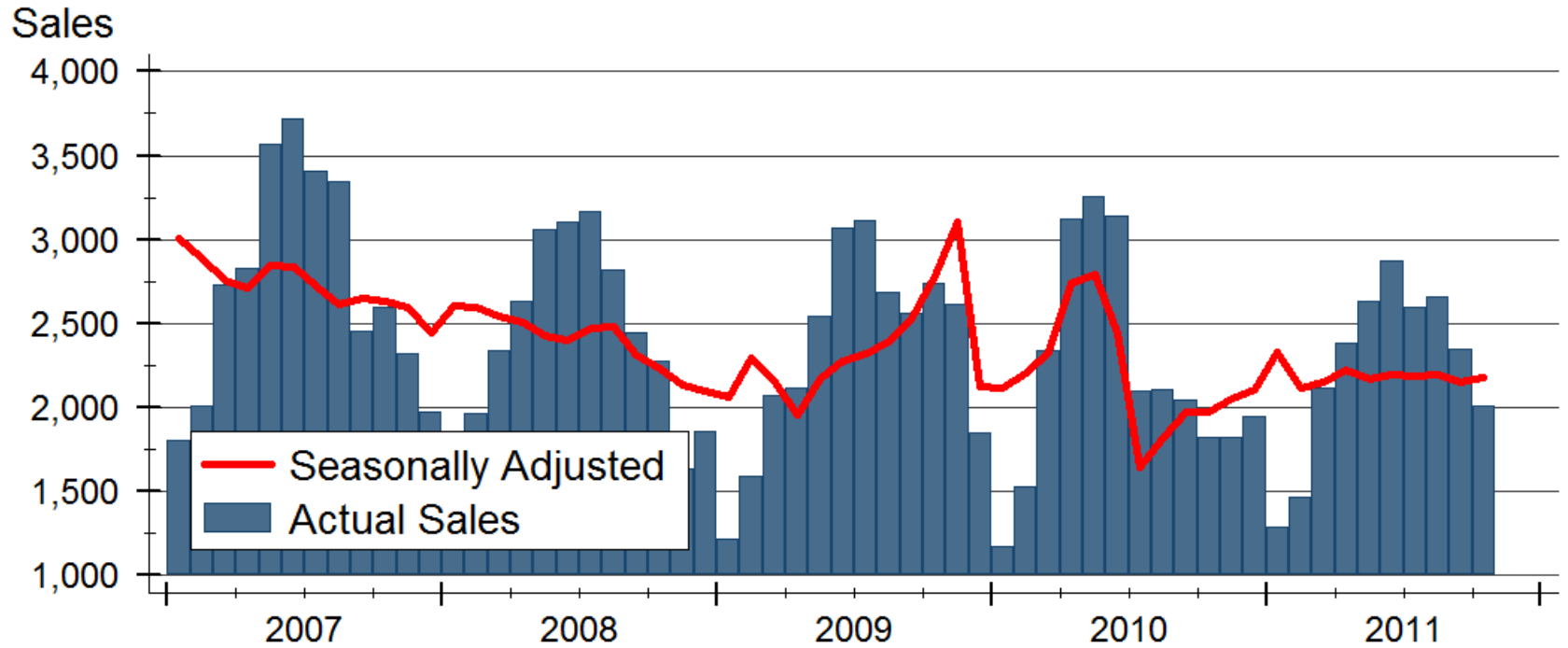
Prepared for the Kansas Association of REALTORS® by WSU Center for Real Estate on 11/21/2011

## October 2011 Kansas Home Sales by Number of Bedrooms



Sources: Participating Kansas REALTOR® MLS systems  
Prepared for the Kansas Association of REALTORS® by WSU Center for Real Estate on 11/21/2011

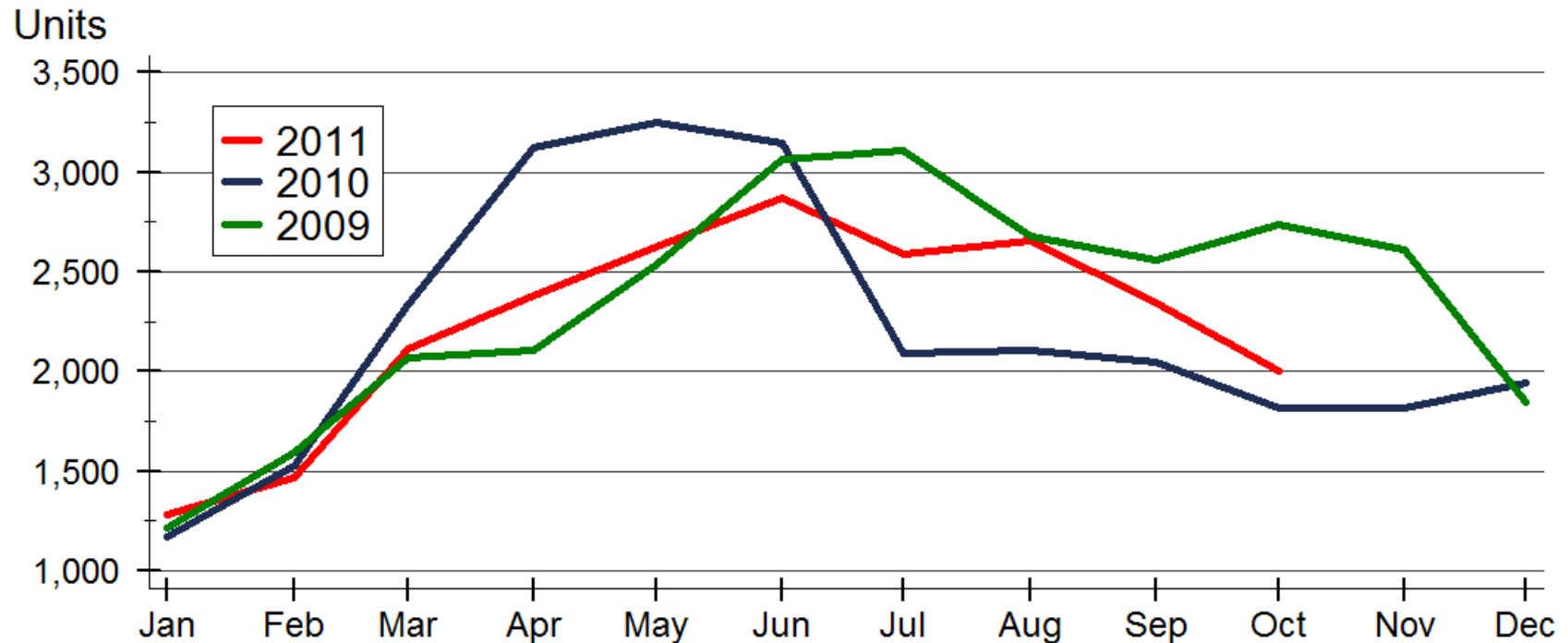
# Kansas Existing Home Sales



Source: Participating Kansas REALTOR® MLS systems

Prepared for the Kansas Association of REALTORS® by WSU Center for Real Estate on 11/21/2011

### Existing Home Sales in Kansas by Month

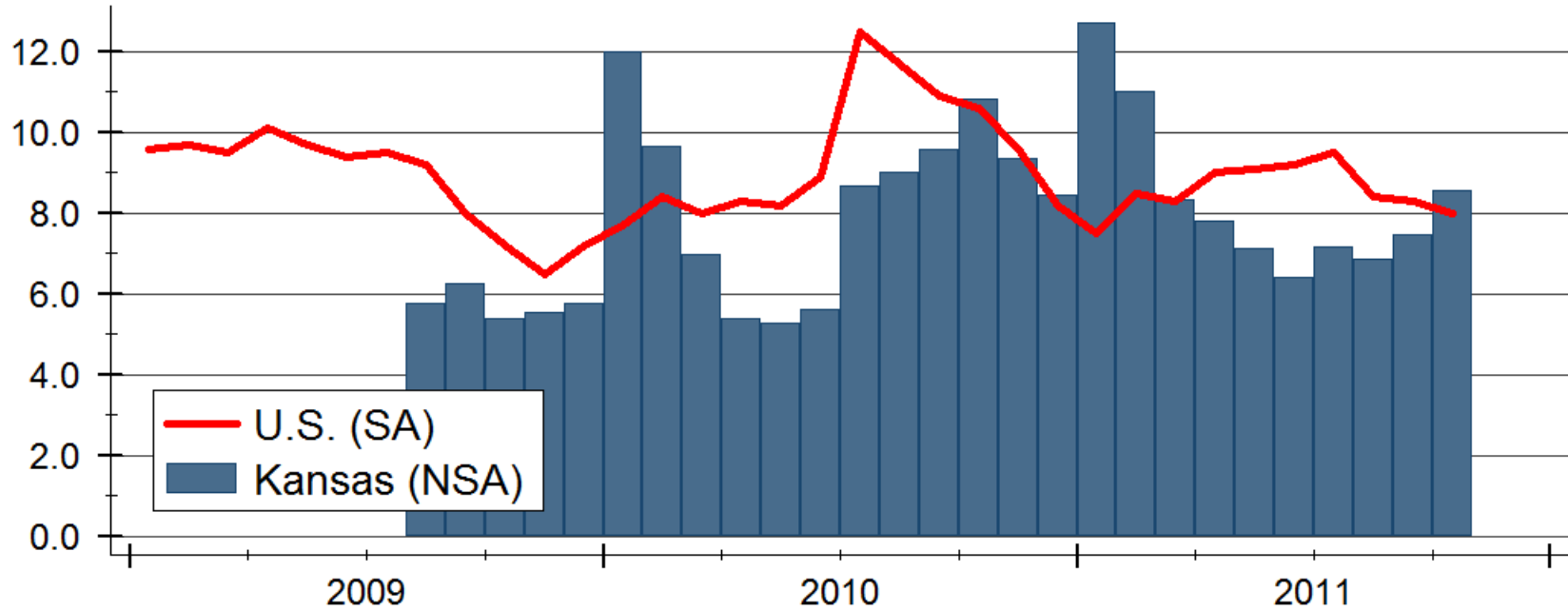


Source: Participating Kansas REALTOR® MLS systems

Prepared for the Kansas Association of REALTORS® by WSU Center for Real Estate on 11/21/2011

## Existing Home Inventories

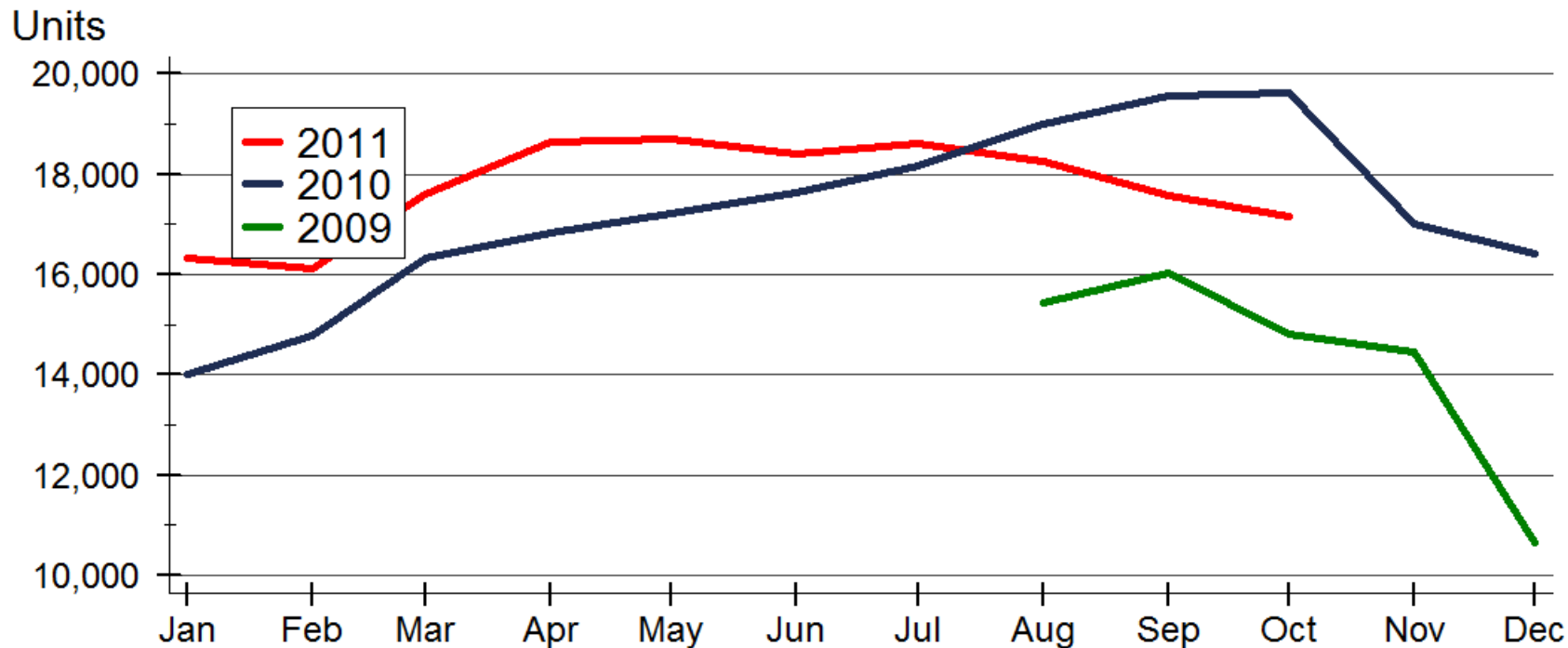
Months' Supply



Sources: NAR and participating Kansas REALTOR® MLS systems

Prepared for the Kansas Association of REALTORS® by WSU Center for Real Estate on 11/21/2011

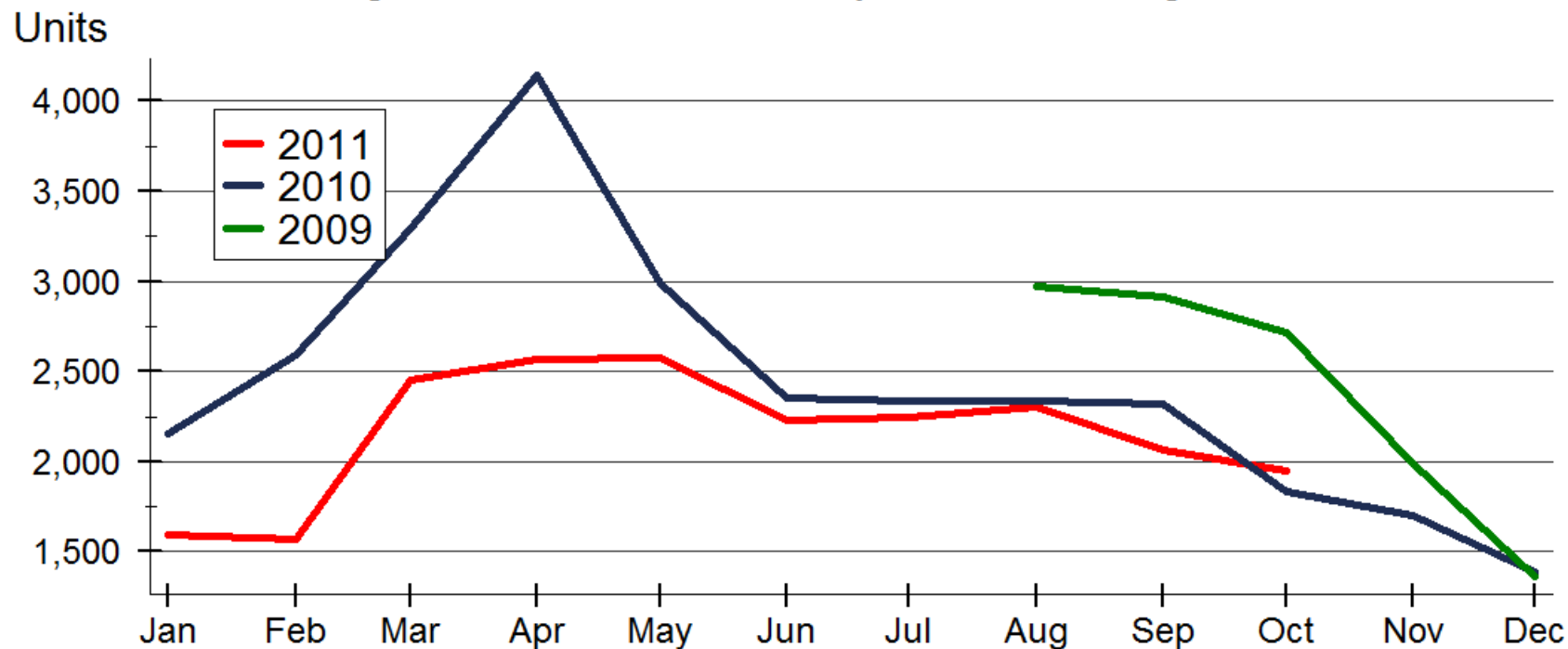
### Active Listings in Kansas by Month - Existing Homes



Source: Participating Kansas REALTOR® MLS systems

Prepared for the Kansas Association of REALTORS® by WSU Center for Real Estate on 11/21/2011

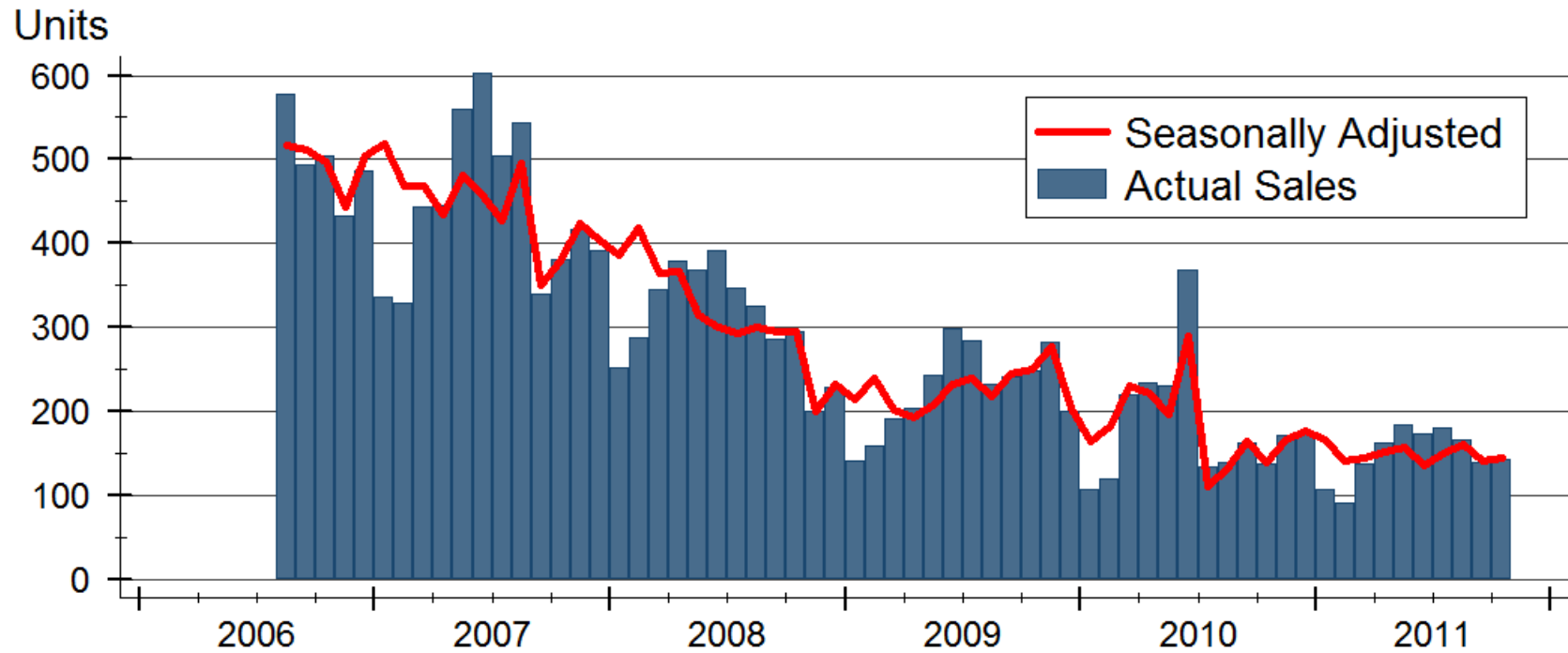
### Pending Home Sales in Kansas by Month - Existing Homes



Source: Participating Kansas REALTOR® MLS systems

Prepared for the Kansas Association of REALTORS® by WSU Center for Real Estate on 11/21/2011

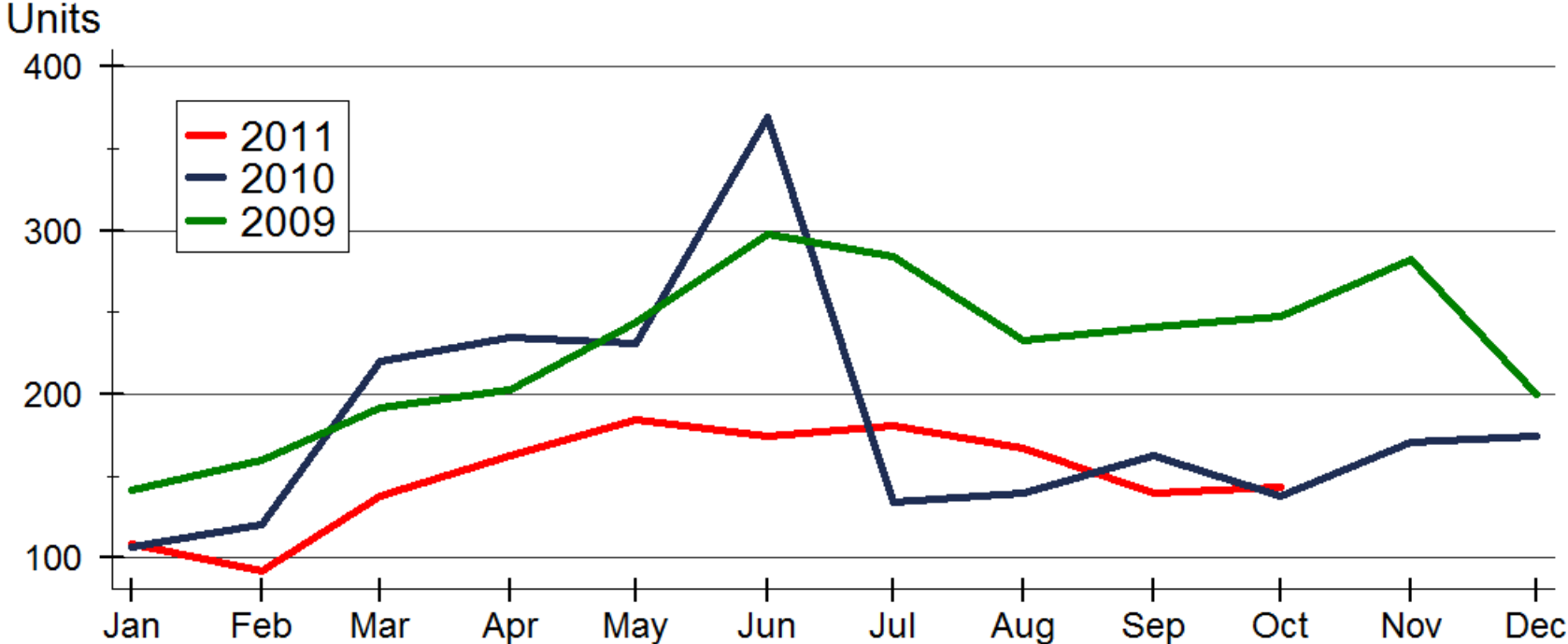
## Kansas New Home Sales



Source: Participating Kansas REALTOR® MLS systems

Prepared for the Kansas Association of REALTORS® by WSU Center for Real Estate on 11/21/2011

### New Home Sales in Kansas by Month

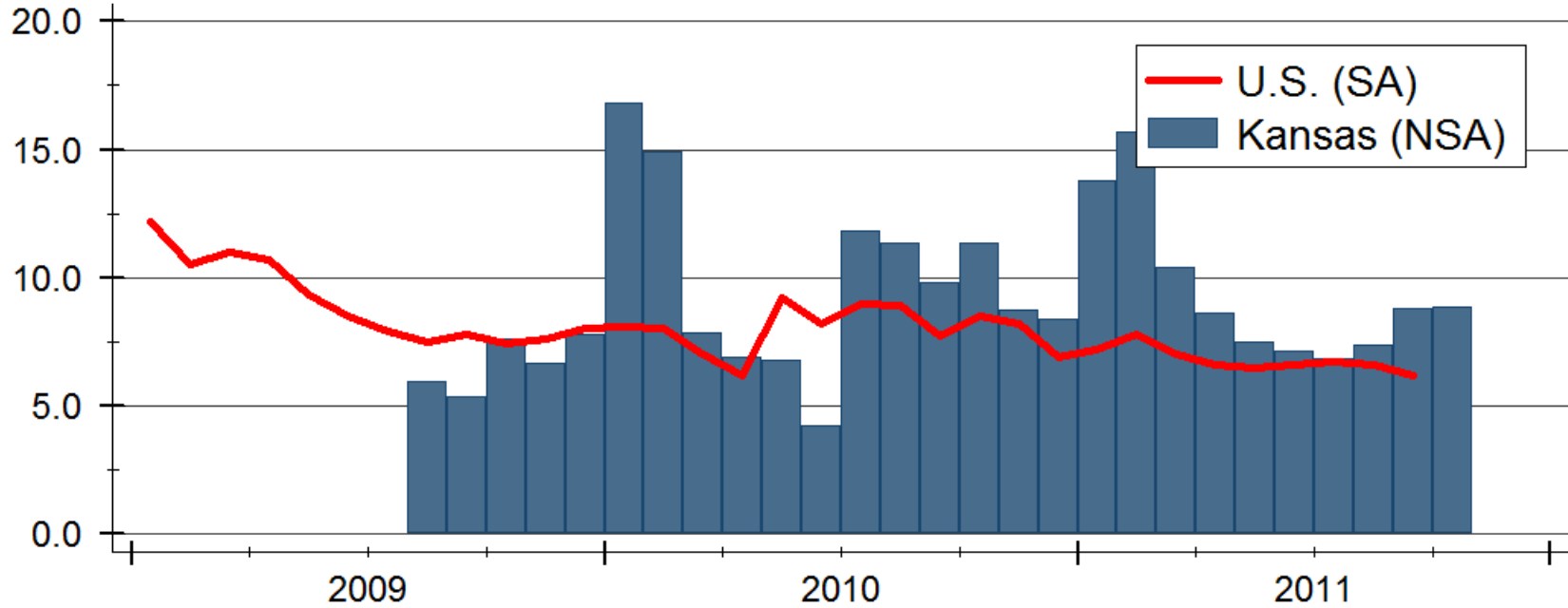


Source: Participating Kansas REALTOR® MLS systems

Prepared for the Kansas Association of REALTORS® by WSU Center for Real Estate on 11/21/2011

## New Home Inventories

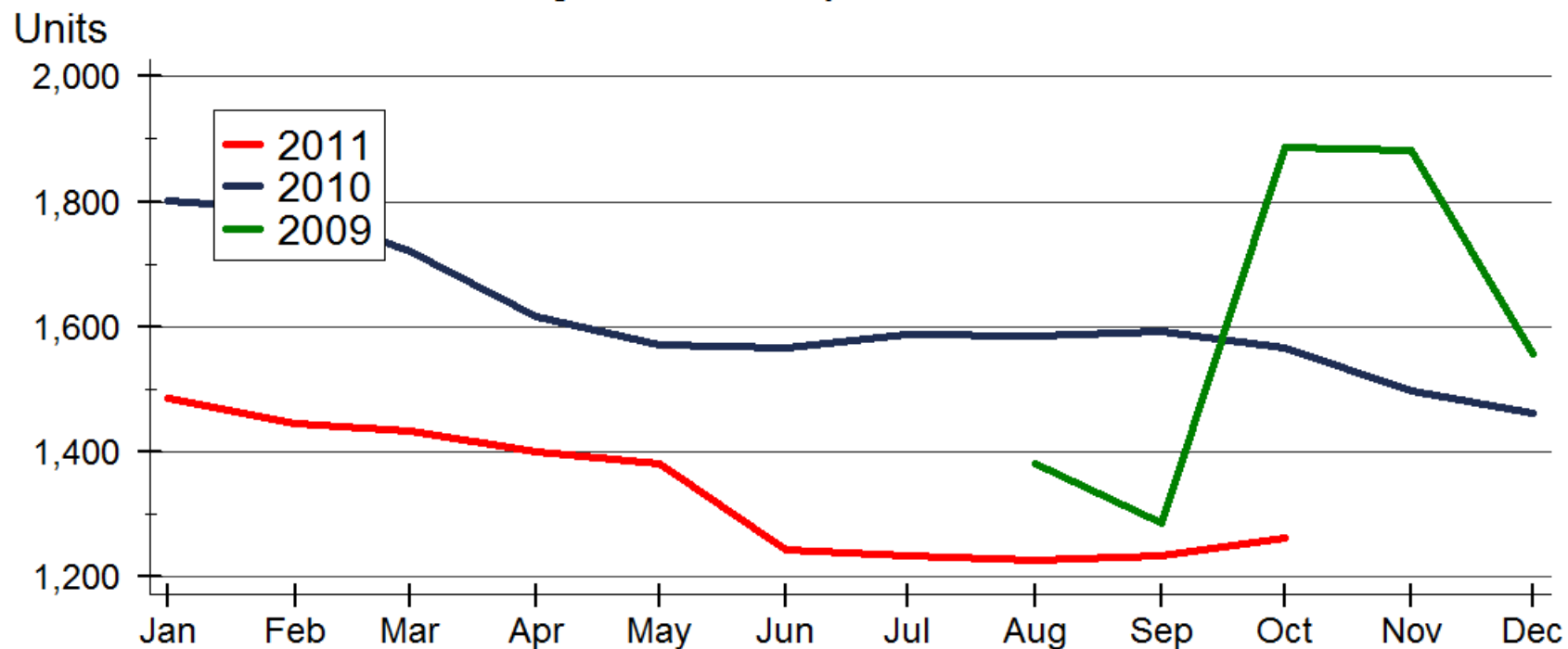
Months' Supply



Sources: U.S. Bureau of the Census and participating Kansas REALTOR® MLS systems

Prepared for the Kansas Association of REALTORS® by WSU Center for Real Estate on 11/21/2011

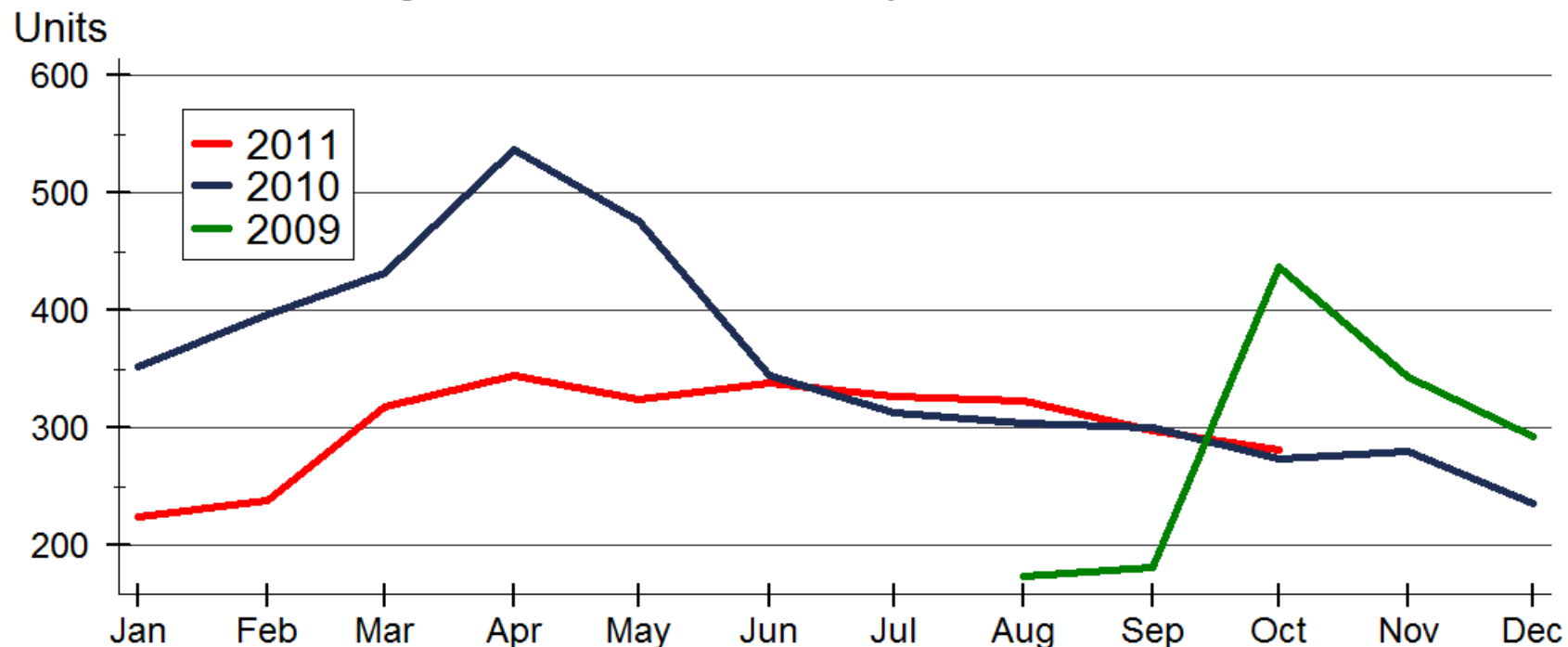
### Active Listings in Kansas by Month - New Homes



Source: Participating Kansas REALTOR® MLS systems

Prepared for the Kansas Association of REALTORS® by WSU Center for Real Estate on 11/21/2011

### Pending Home Sales in Kansas by Month - New Homes



Source: Participating Kansas REALTOR® MLS systems

Prepared for the Kansas Association of REALTORS® by WSU Center for Real Estate on 11/21/2011

## 2011 Kansas Market Statistics with Year Over Year Comparison

	<u>Sales</u>	<u>Average Price</u>	<u>% of List Price</u>	<u>DOM</u>	<u>Active Listings</u>	<u>Months Supply</u>	<u>Pending Sales</u>
January '11	1335	\$146,513	95.4%	113	17,805	13.3	2,286
2010	5.60%	-8.10%	-0.9%	6.6%	12.7%	6.4%	-8.7%
2009	-0.7%	4.70%	-0.5%	3.7%	N/A	N/A	N/A
February '11	1508	\$139,685	94.8%	110	17,577	11.7	2,390
2010	-7.70%	-1.80%	-1.4%	11.9%	6.1%	15.8%	-20.1%
2009	-13.0%	-4.00%	-1.1%	7.4%	N/A	N/A	N/A
March '11	2209	\$142,661	96.6%	108	19,035	8.6	3,333
2010	-13.70%	-5.60%	-0.2%	-0.5%	5.5%	21.1%	-10.5%
2009	-2.3%	-1.60%	-0.1%	1.4%	N/A	N/A	N/A
April '11	2434	\$143,392	96.4%	113	20,045	8.2	3,595
2010	-27.50%	-7.00%	-0.8%	14.3%	8.6%	49.1%	-23.1%
2009	5.2%	-5.00%	-0.4%	16.8%	N/A	N/A	N/A
May '11	2760	\$156,432	96.8%	98	20,261	7.3	3,618
2010	-20.80%	-0.10%	-0.5%	3.9%	7.8%	35.2%	4.5%
2009	-0.8%	-2.70%	0.0%	-4.2%	N/A	N/A	N/A
June '11	2990	\$165,608	97.2%	104	19,665	6.6	3,205
2010	-14.80%	-1.10%	-0.1%	11.2%	2.4%	20.0%	18.7%
2009	-11.2%	-1.20%	-0.2%	8.6%	N/A	N/A	N/A
July '11	2735	\$161,602	95.4%	96	19,841	7.3	3,197
2010	22.70%	-1.20%	-0.1%	2.3%	0.4%	-18.0%	20.6%
2009	-19.5%	-9.82%	1.8%	8.6%	N/A	N/A	N/A
August '11	2789	\$159,082	95.4%	98	19,464	7.0	3,179
2010	24.10%	2.70%	-0.6%	6.0%	-7.3%	-24.7%	13.4%
2009	-4.3%	1.70%	-1.7%	4.3%	N/A	N/A	N/A
September '11	2473	\$149,857	94.9%	107	18,812	7.6	2,864
2010	12.20%	-0.40%	0.3%	11.3%	-12.7%	-22.4%	5.9%
2009	-11.6%	-0.30%	-2.2%	3.3%	N/A	N/A	N/A
October '11	2146	\$151,382	94.6%	109	18,432	8.6	2,714
2010	9.80%	-3.10%	0.3%	0.4%	-14.7%	-22.5%	0.7%
2009	-28.1%	-1.10%	-2.6%	9.3%	N/A	N/A	N/A
Year to Date '11	**23,836	\$152,641	95.1%	105			
2010	-2.6%	-1.50%	-0.4%	6.1%	Not applicable	Not applicable	Not applicable
2009	-8.1%	-2.10%	-1.8%	4.5%			
November '10	1,933	\$153,705	96.20%	105	18,511	9.6	2,446
2009	-32.50%	-0.4%	-0.7%	9.40%	13.30%	68.40%	-25.10%
2008	7.20%	2.2%	0.7%	2.90%	N/A	N/A	N/A
December '10	2,032	\$ 158,628	95.9%	111	17,885	8.8	2006
2009	0	4%	0%	9%	19%	9%	0%
2008	3.00%	6.0%	0.0%	14.40%	N/A	N/A	N/A
2010 Year End	28,062	\$157,108	96.60%	99	N/A	N/A	N/A
2009	-8.0%	0%	-0.2%	0%	N/A	N/A	N/A
2008	-13.2%	-3.2%	-0.4%	2.1%	N/A	N/A	N/A

\*\*Year to Date '11 Sales is the current total from all MLS's. The total may be different than the cumulative monthly figures, due to changes made in MLS's after monthly data was published.