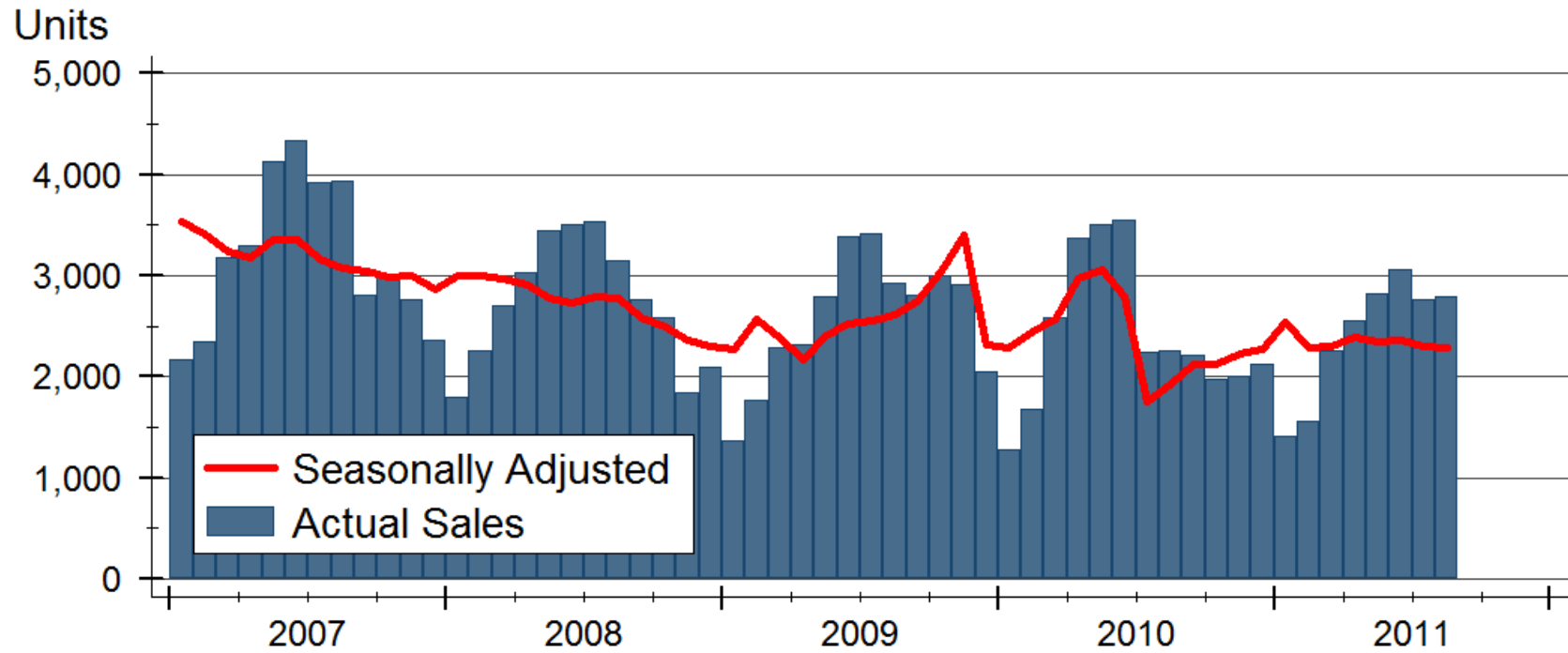


## 2011 Kansas Market Statistics with Year Over Year Comparison

	<u>Sales</u>	<u>Average Price</u>	<u>% of List Price</u>	<u>DOM</u>	<u>Active Listings</u>	<u>Months Supply</u>	<u>Pending Sales</u>
January '11	1335	\$146,513	95.4%	113	17,805	13.3	2,286
2010	5.60%	-8.10%	-0.9%	6.6%	12.7%	6.4%	-8.7%
2009	-0.7%	4.70%	-0.5%	3.7%	N/A	N/A	N/A
February '11	1508	\$139,685	94.8%	110	17,577	11.7	2,390
2010	-7.70%	-1.80%	-1.4%	11.9%	6.1%	15.8%	-20.1%
2009	-13.0%	-4.00%	-1.1%	7.4%	N/A	N/A	N/A
March '11	2209	\$142,661	96.6%	108	19,035	8.6	3,333
2010	-13.70%	-5.60%	-0.2%	-0.5%	5.5%	21.1%	-10.5%
2009	-2.3%	-1.60%	-0.1%	1.4%	N/A	N/A	N/A
April '11	2434	\$143,392	96.4%	113	20,045	8.2	3,595
2010	-27.50%	-7.00%	-0.8%	14.3%	8.6%	49.1%	-23.1%
2009	5.2%	-5.00%	-0.4%	16.8%	N/A	N/A	N/A
May '11	2760	\$156,432	96.8%	98	20,261	7.3	3,618
2010	-20.80%	-0.10%	-0.5%	3.9%	7.8%	35.2%	4.5%
2009	-0.8%	-2.70%	0.0%	-4.2%	N/A	N/A	N/A
June '11	2990	\$165,608	97.2%	104	19,665	6.6	3,205
2010	-14.80%	-1.10%	-0.1%	11.2%	2.4%	20.0%	18.7%
2009	-11.2%	-1.20%	-0.2%	8.6%	N/A	N/A	N/A
July '11	2735	\$161,602	95.4%	96	19,841	7.3	3,197
2010	22.70%	-1.20%	-0.1%	2.3%	0.4%	-18.0%	20.6%
2009	-19.5%	-9.82%	1.8%	8.6%	N/A	N/A	N/A
August '11	2789	\$159,082	95.4%	98	19,464	7.0	3,179
2010	24.10%	2.70%	-0.6%	6.0%	-7.3%	-24.7%	13.4%
2009	-4.3%	1.70%	-1.7%	4.3%	N/A	N/A	N/A
Year to Date '11	**19,143	\$153,209	95.2%	105	Not applicable	Not applicable	Not applicable
2010	-5.8%	-1.60%	-0.6%	6.6%			
2009	-5.0%	-2.70%	-1.7%	3.9%			
August '10	2,180	\$156,000	96.30%	91	20,588	9.4	2,639
	-24.30%	-0.08%	-0.70%	-2.20%	23.50%		-18.40%
September '10	2138	\$151,383	95.90%	95	21,148	9.9	2,618
	-22.70%	0.40%	-0.90%	-7.80%	25.20%		-17.10%
October '10	1896	\$157,461	95.80%	112	21,199	11.2	2607
	-35.70%	2.40%	-1.30%	14%	26.60%		-38.00%
November '10	1,933	\$153,705	96.20%	105	18,511	9.6	2,446
2009	-32.50%	-0.4%	-0.7%	9.40%	13.30%	68.40%	-25.10%
2008	7.20%	2.2%	0.7%	2.90%	N/A	N/A	N/A
December '10	2,032	\$ 158,628	95.9%	111	17,885	8.8	2006
2009	0	4%	0%	9%	19%	9%	0%
2008	3.00%	6.0%	0.0%	14.40%	N/A	N/A	N/A
2010 Year End	28,062	\$157,108	96.60%	99	N/A	N/A	N/A
2009	-8.0%	0%	-0.2%	0%			
2008	-13.2%	-3.2%	-0.4%	2.1%	N/A	N/A	N/A

\*\*Year to Date '11 Sales is the current total from all MLS's. The total may be different than the cumulative monthly figures, due to changes made in MLS's after monthly data was published.

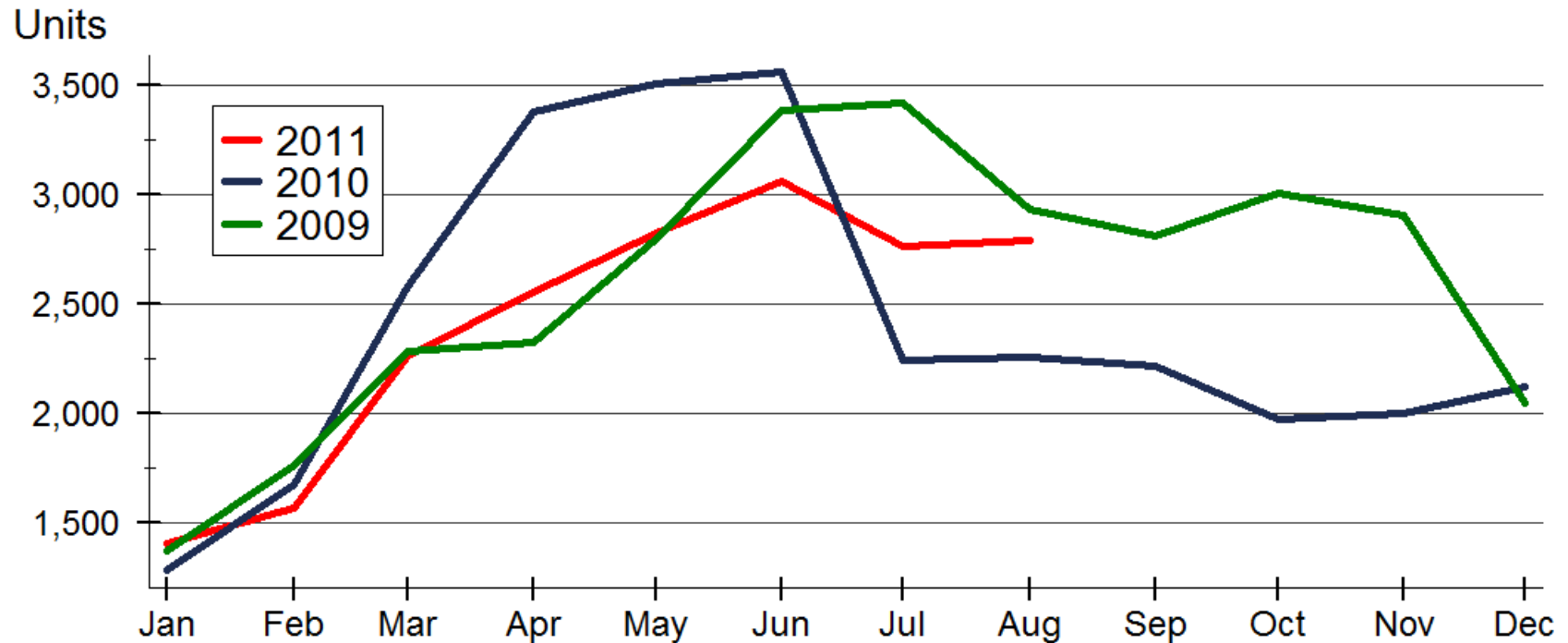
## Kansas Total Home Sales



Source: Participating Kansas REALTOR® MLS systems

Prepared for the Kansas Association of REALTORS® by WSU Center for Real Estate on 9/21/2011

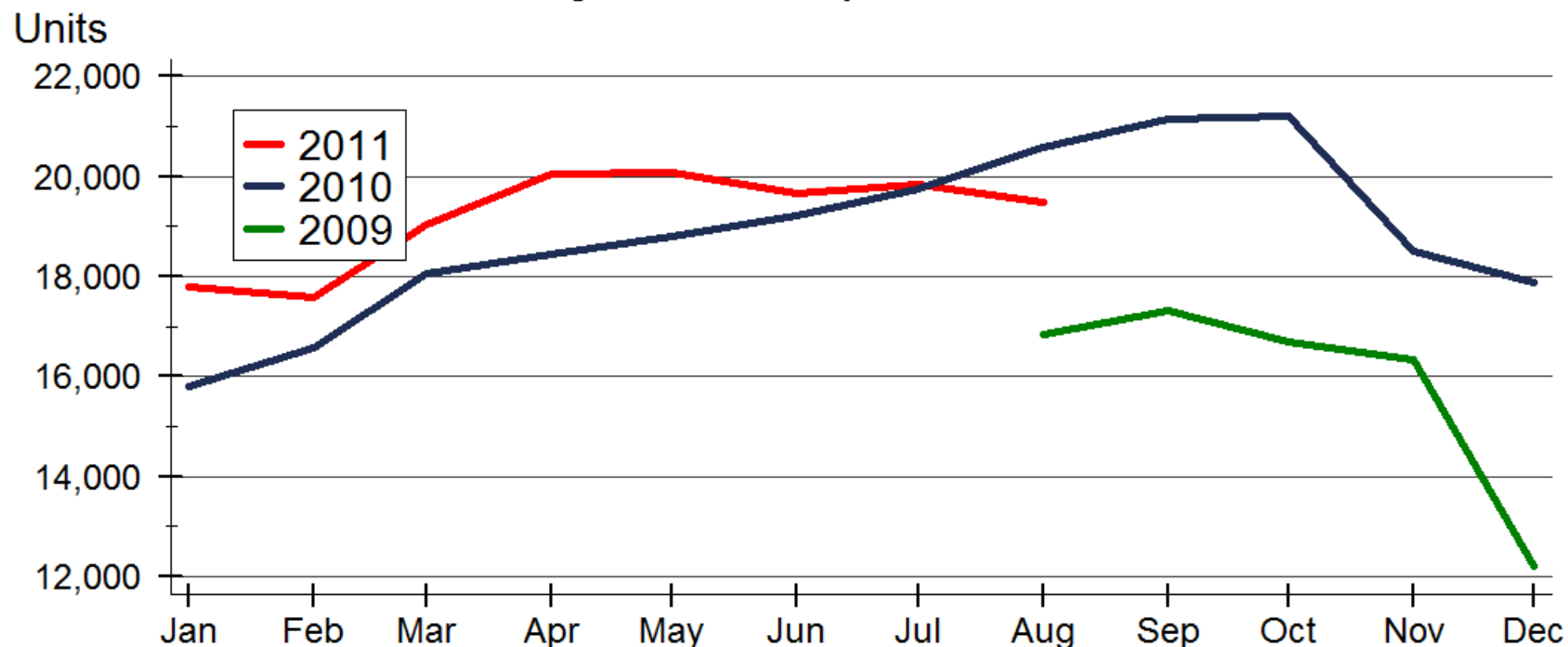
### Total Home Sales in Kansas by Month



Source: Participating Kansas REALTOR® MLS systems

Prepared for the Kansas Association of REALTORS® by WSU Center for Real Estate on 9/21/2011

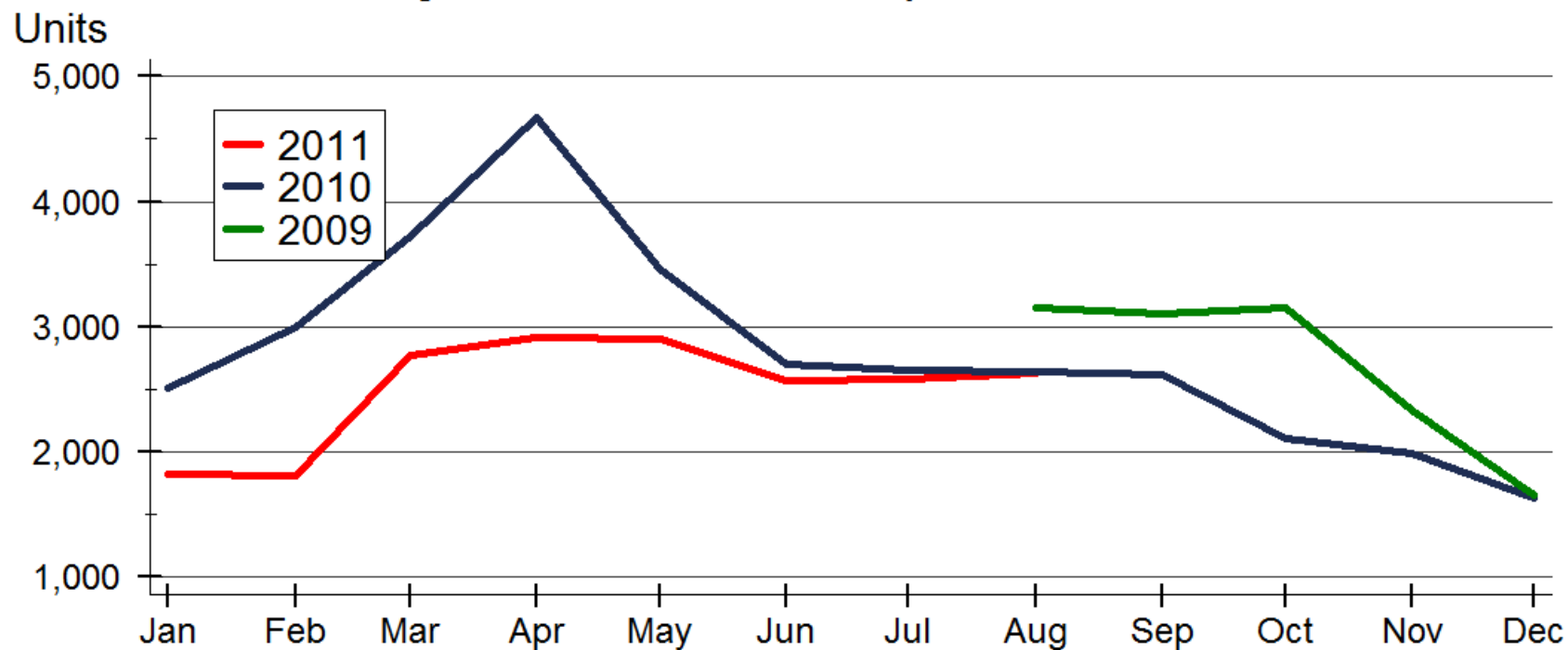
### Active Listings in Kansas by Month - All Homes



Source: Participating Kansas REALTOR® MLS systems

Prepared for the Kansas Association of REALTORS® by WSU Center for Real Estate on 9/21/2011

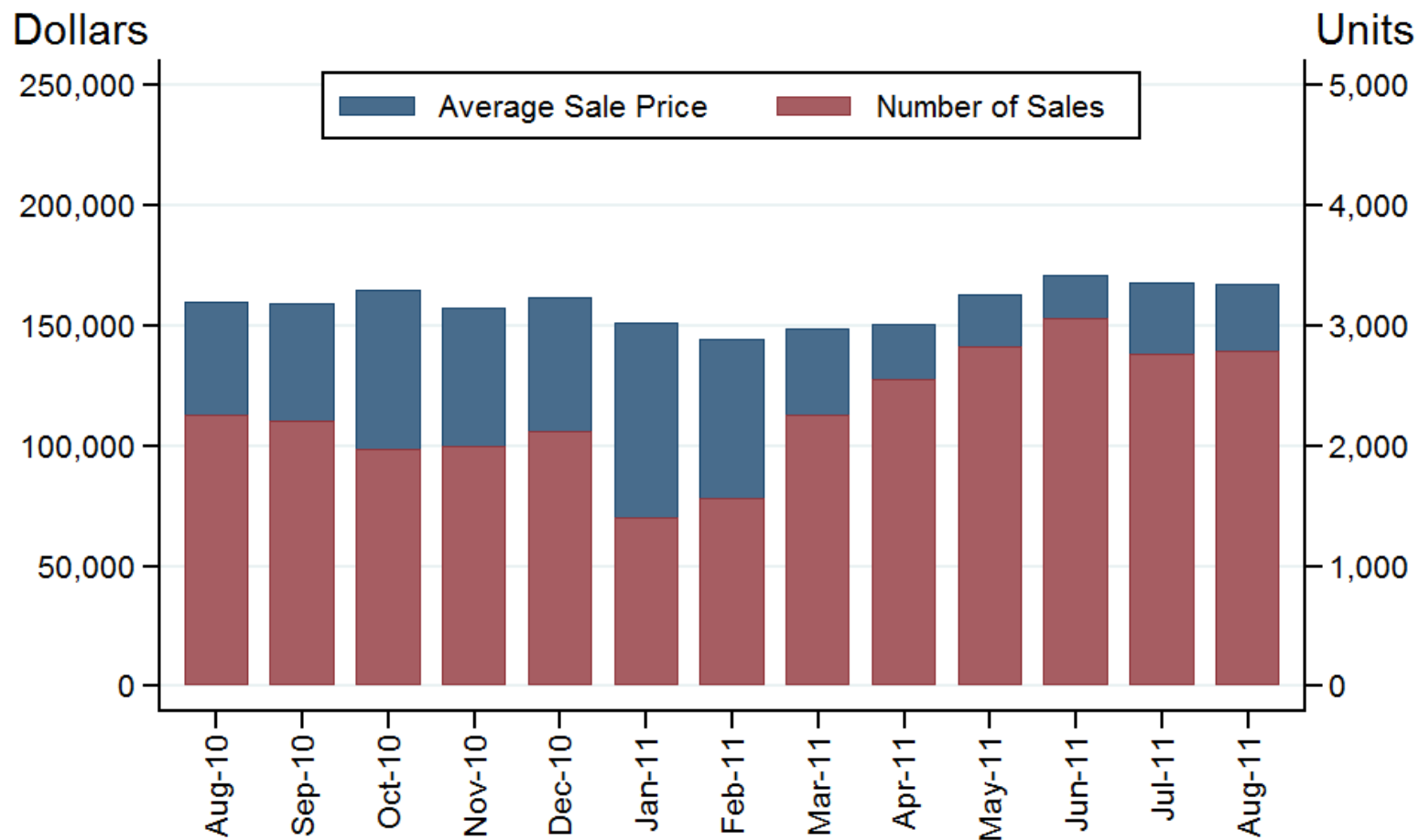
### Pending Home Sales in Kansas by Month - All Homes



Source: Participating Kansas REALTOR® MLS systems

Prepared for the Kansas Association of REALTORS® by WSU Center for Real Estate on 9/21/2011

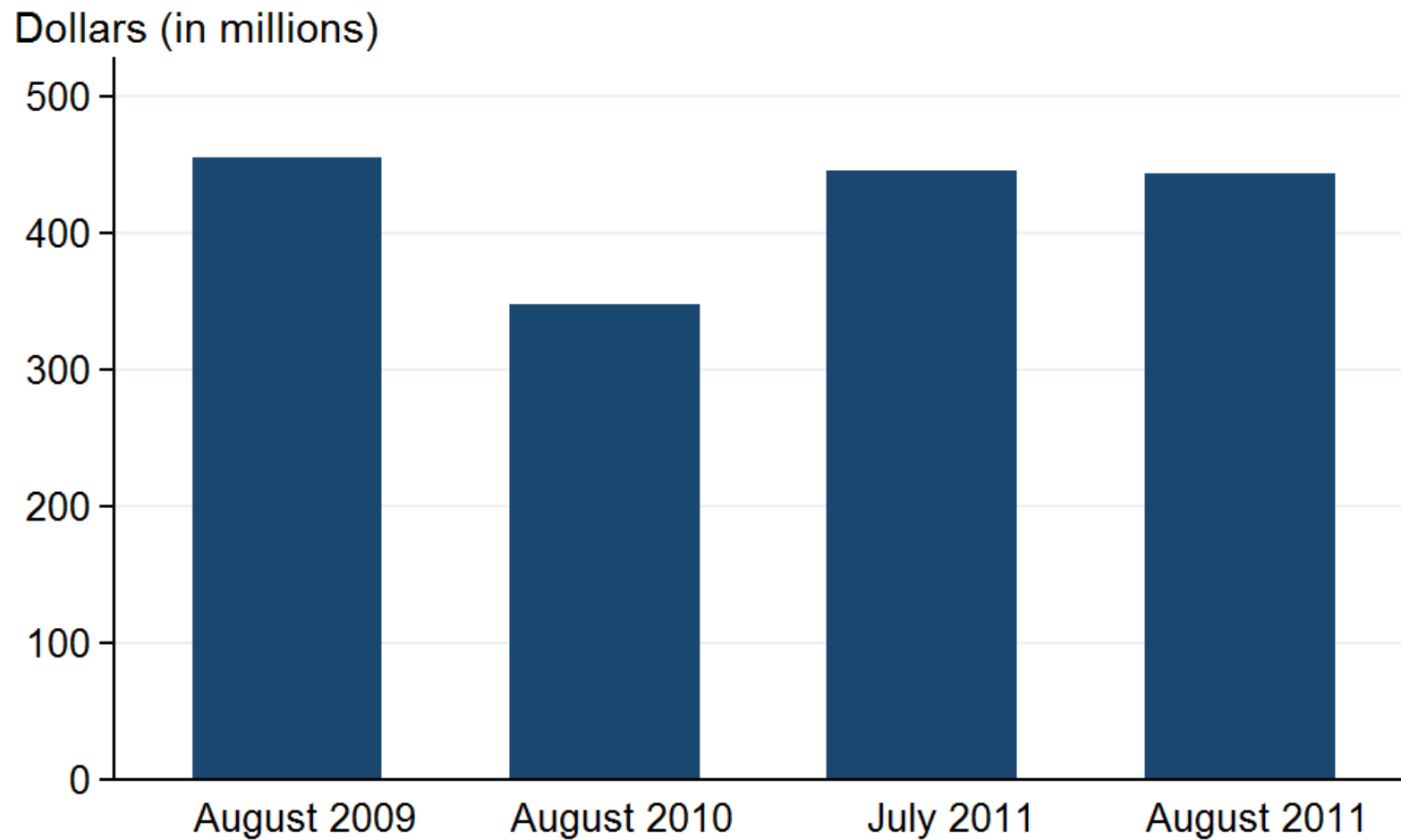
## Kansas Home Sales Activity August 2011



Sources: Participating Kansas REALTOR® MLS systems

Prepared for the Kansas Association of REALTORS® by WSU Center for Real Estate on 9/21/2011

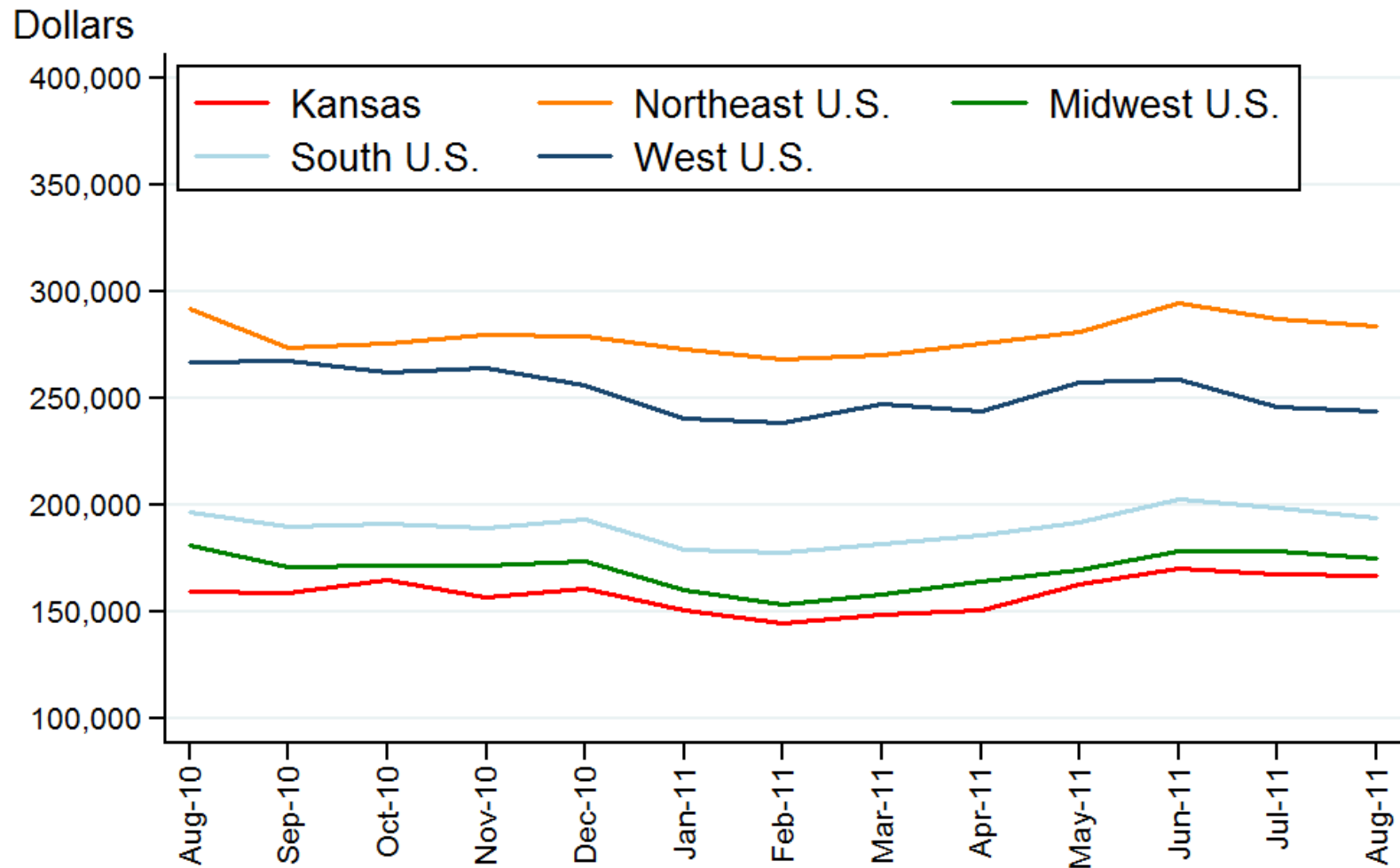
## Kansas Home Sales Activity Volume in Millions



Sources: Participating Kansas REALTOR® MLS systems

Prepared for the Kansas Association of REALTORS® by WSU Center for Real Estate on 9/21/2011

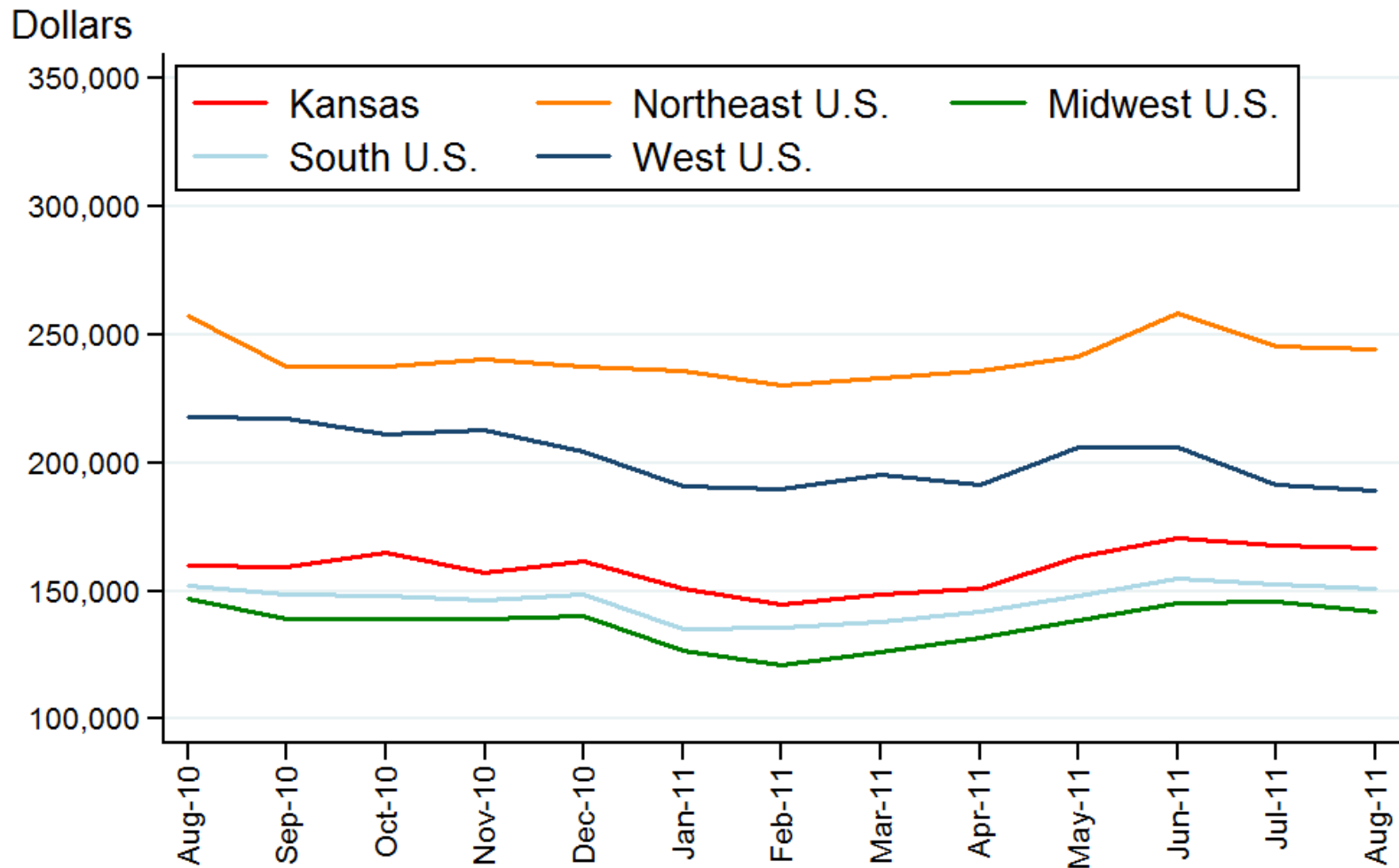
## Average Sale Price of Homes Sold through August 2011



Sources: NAR and participating Kansas REALTOR® MLS systems

Prepared for the Kansas Association of REALTORS® by WSU Center for Real Estate on 9/21/2011

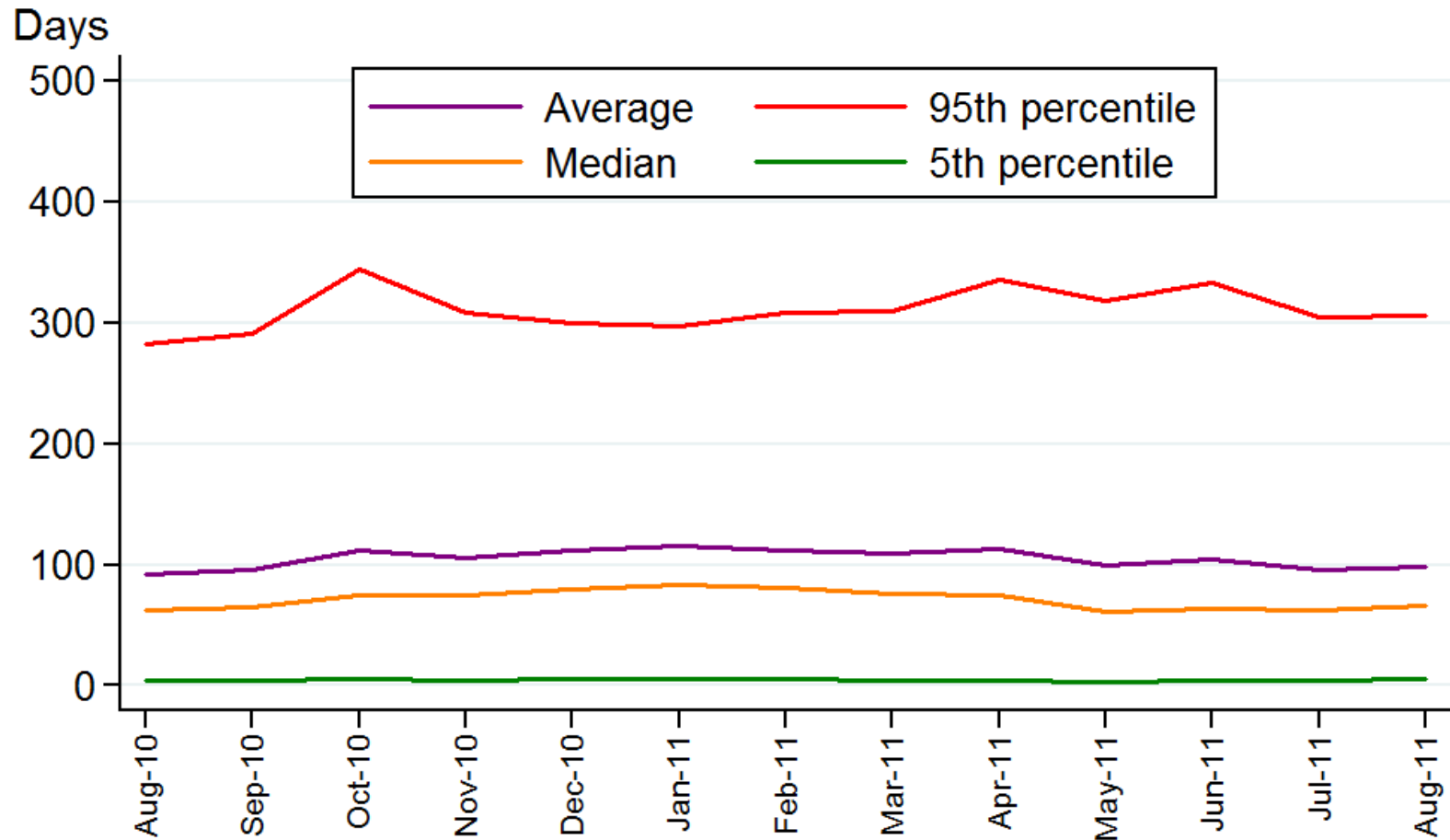
## Median Sale Price of Homes Sold through August 2011



Sources: NAR and participating Kansas REALTOR® MLS systems

Prepared for the Kansas Association of REALTORS® by WSU Center for Real Estate on 9/21/2011

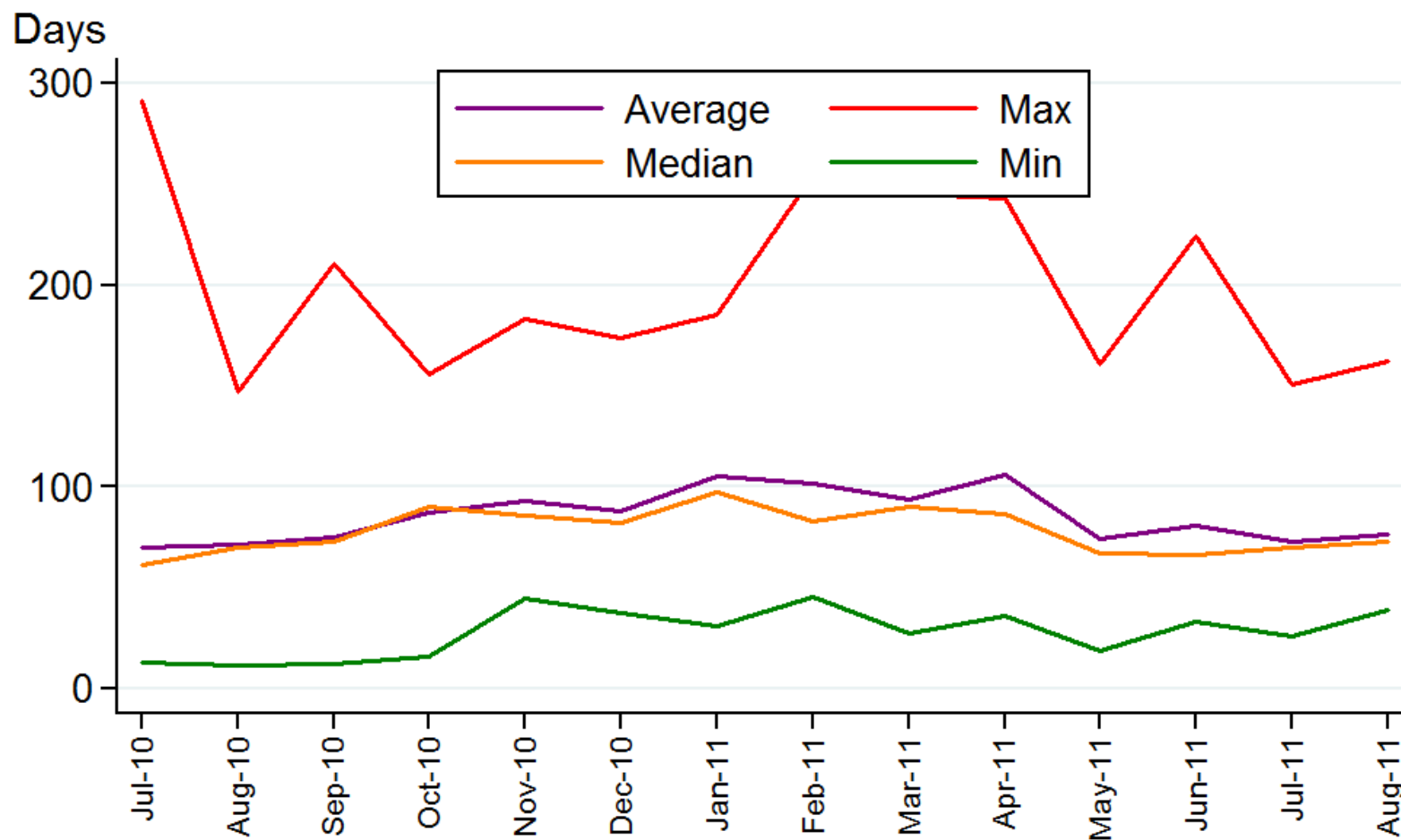
## Kansas Home Sales Days on the Market



Sources: Participating Kansas REALTOR® MLS systems

Prepared for the Kansas Association of REALTORS® by WSU Center for Real Estate on 9/21/2011

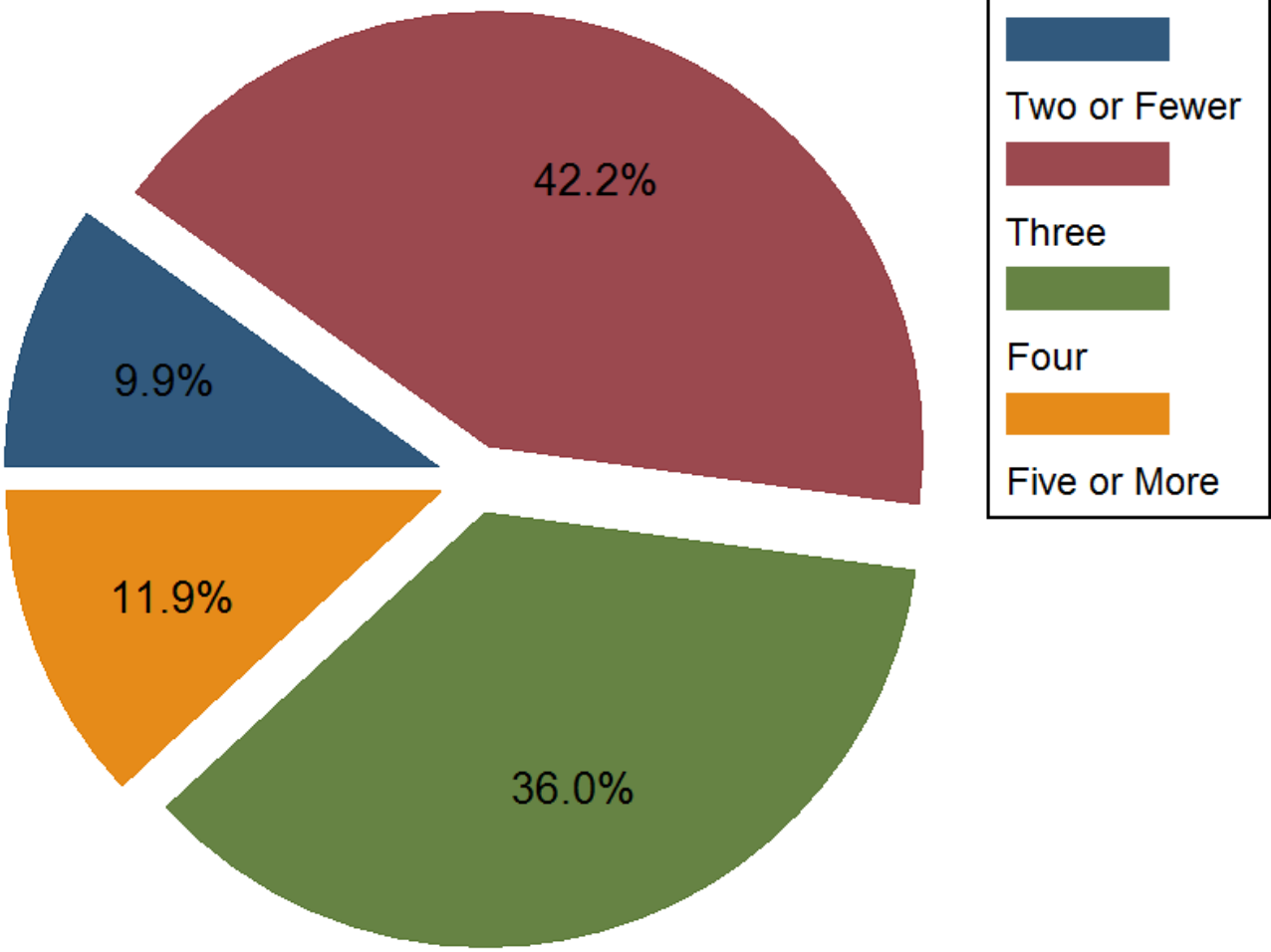
## Kansas Home Sales Median Days on Market across MLS Systems



Sources: Participating Kansas REALTOR® MLS systems

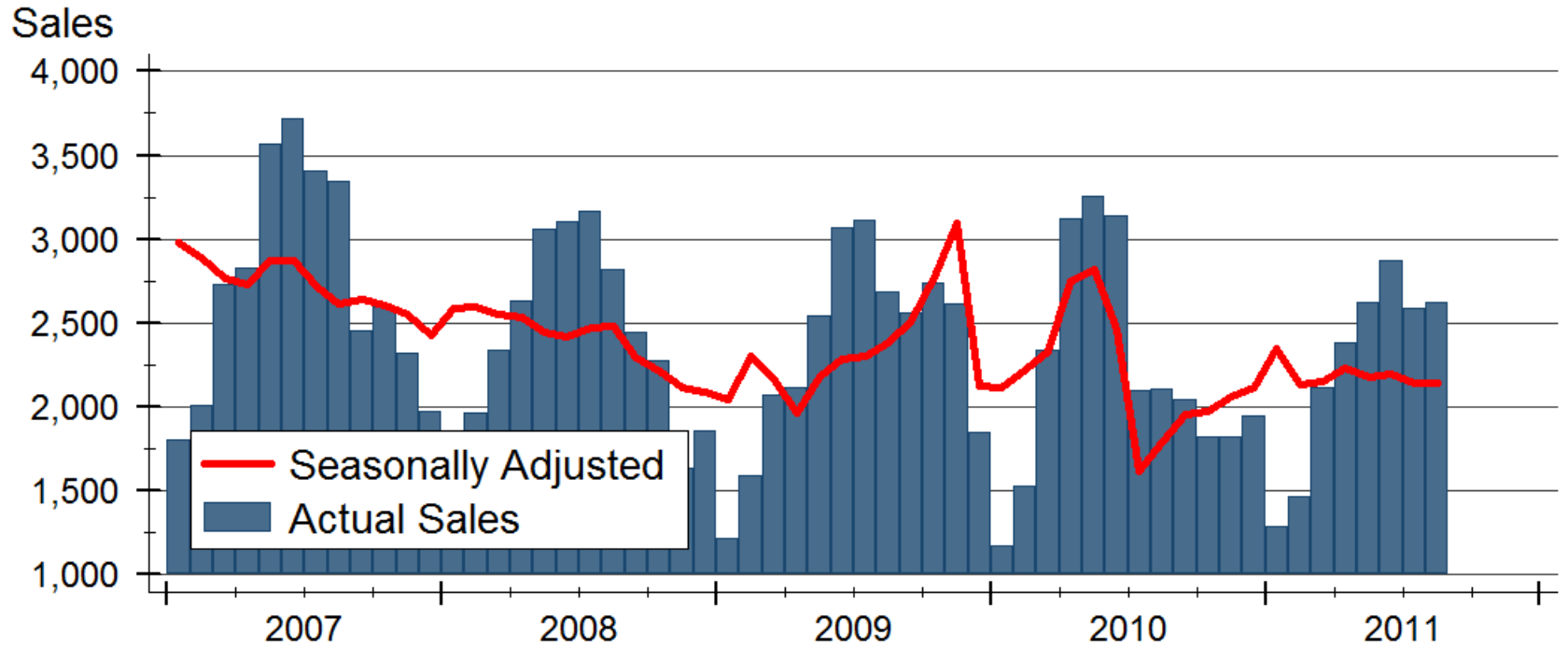
Prepared for the Kansas Association of REALTORS® by WSU Center for Real Estate on 9/21/2011

# August 2011 Kansas Home Sales by Number of Bedrooms



Sources: Participating Kansas REALTOR® MLS systems  
Prepared for the Kansas Association of REALTORS® by WSU Center for Real Estate on 9/21/2011

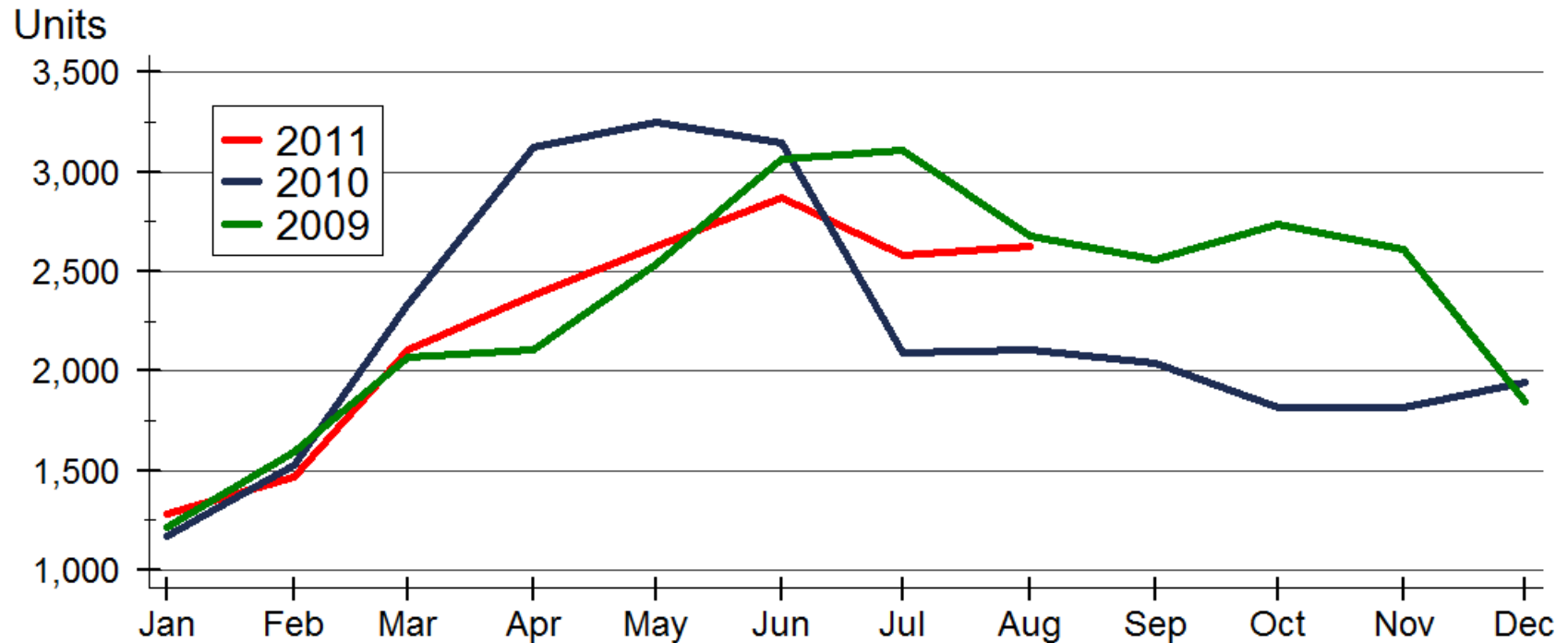
# Kansas Existing Home Sales



Source: Participating Kansas REALTOR® MLS systems

Prepared for the Kansas Association of REALTORS® by WSU Center for Real Estate on 9/21/2011

### Existing Home Sales in Kansas by Month

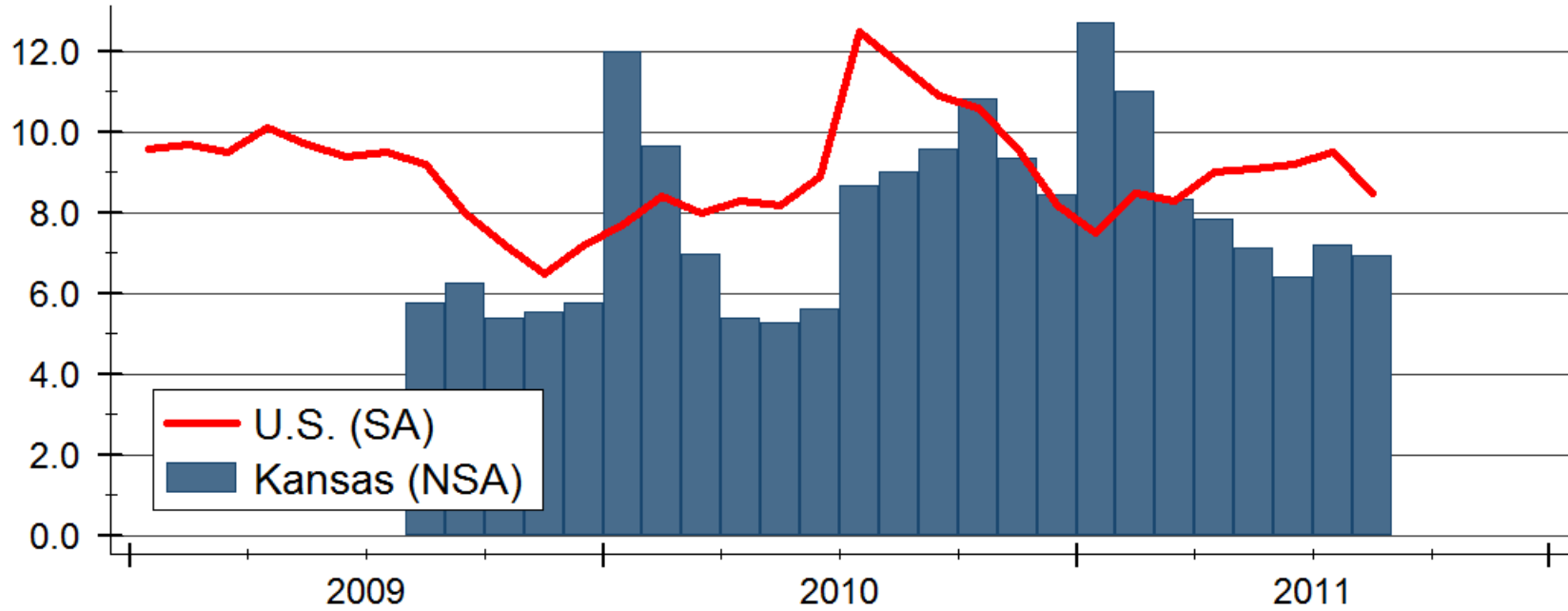


Source: Participating Kansas REALTOR® MLS systems

Prepared for the Kansas Association of REALTORS® by WSU Center for Real Estate on 9/21/2011

## Existing Home Inventories

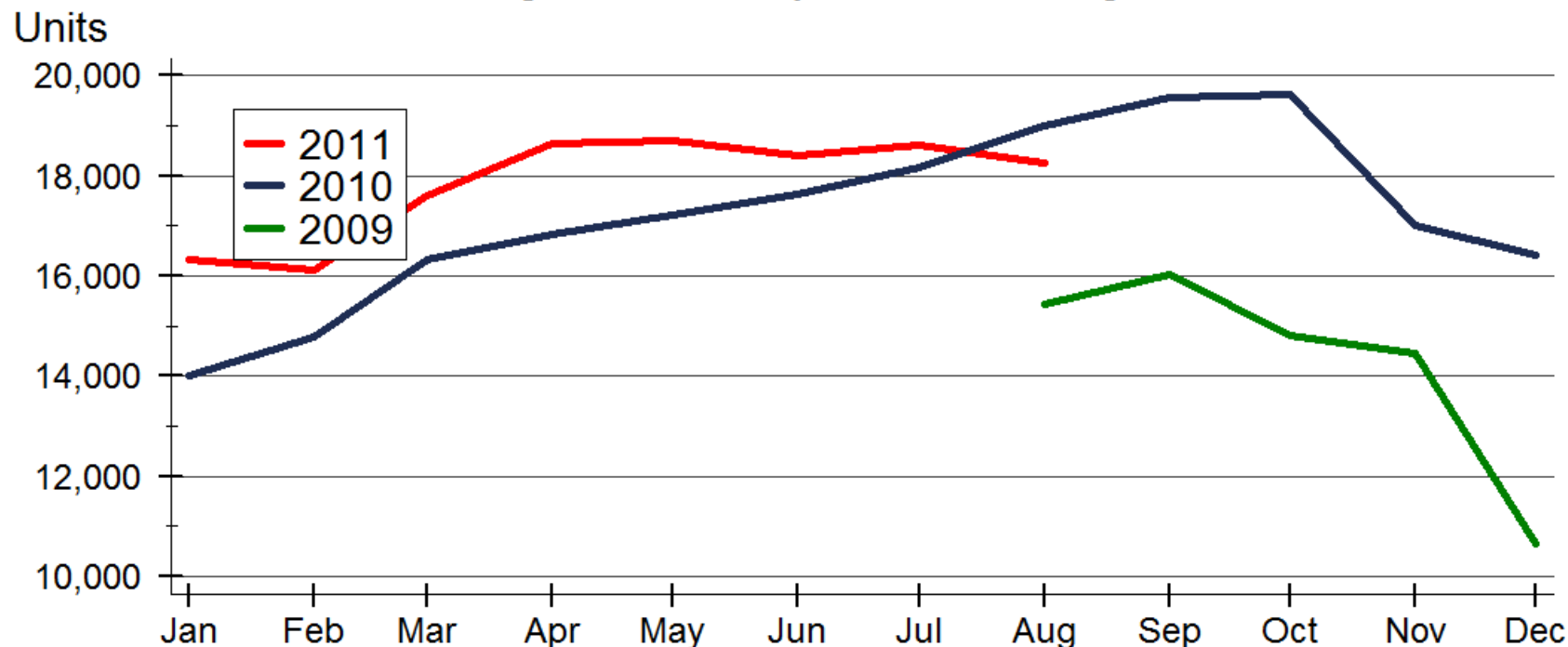
Months' Supply



Sources: NAR and participating Kansas REALTOR® MLS systems

Prepared for the Kansas Association of REALTORS® by WSU Center for Real Estate on 9/21/2011

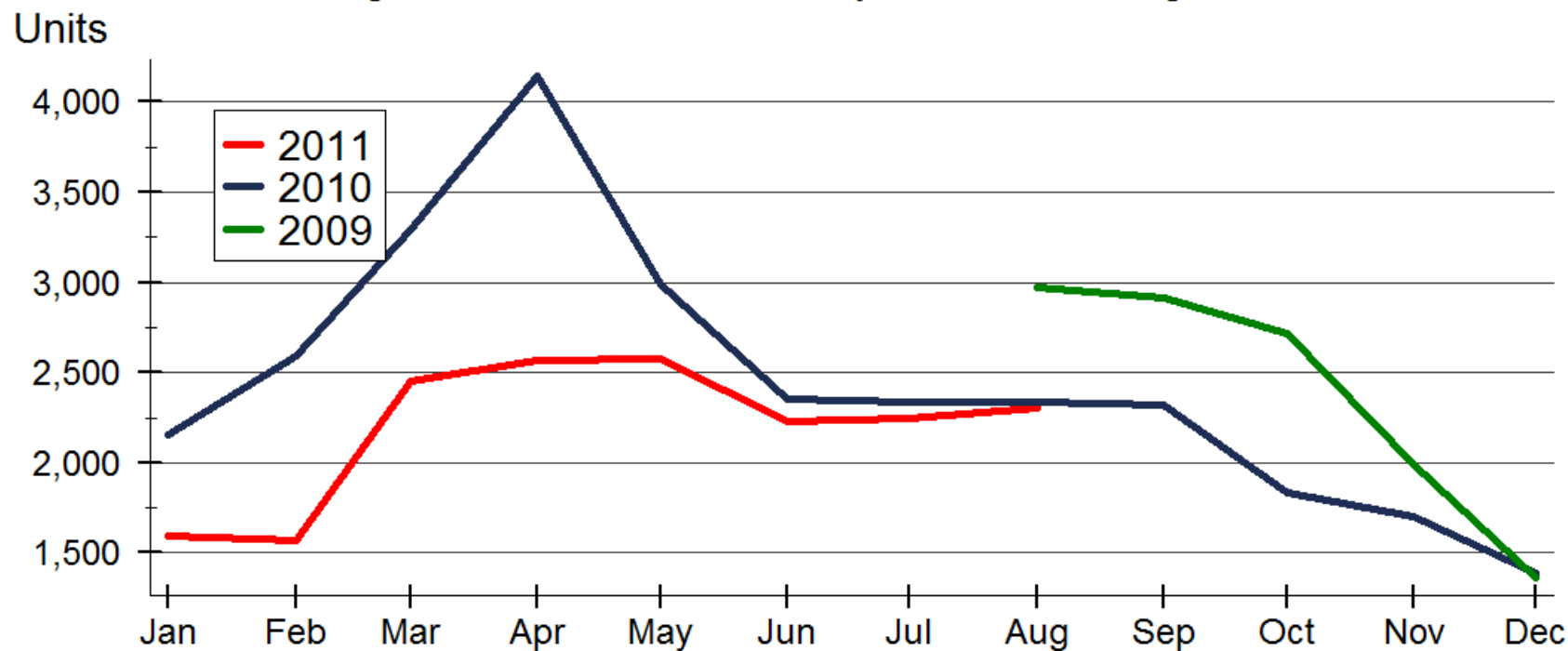
### Active Listings in Kansas by Month - Existing Homes



Source: Participating Kansas REALTOR® MLS systems

Prepared for the Kansas Association of REALTORS® by WSU Center for Real Estate on 9/21/2011

### Pending Home Sales in Kansas by Month - Existing Homes

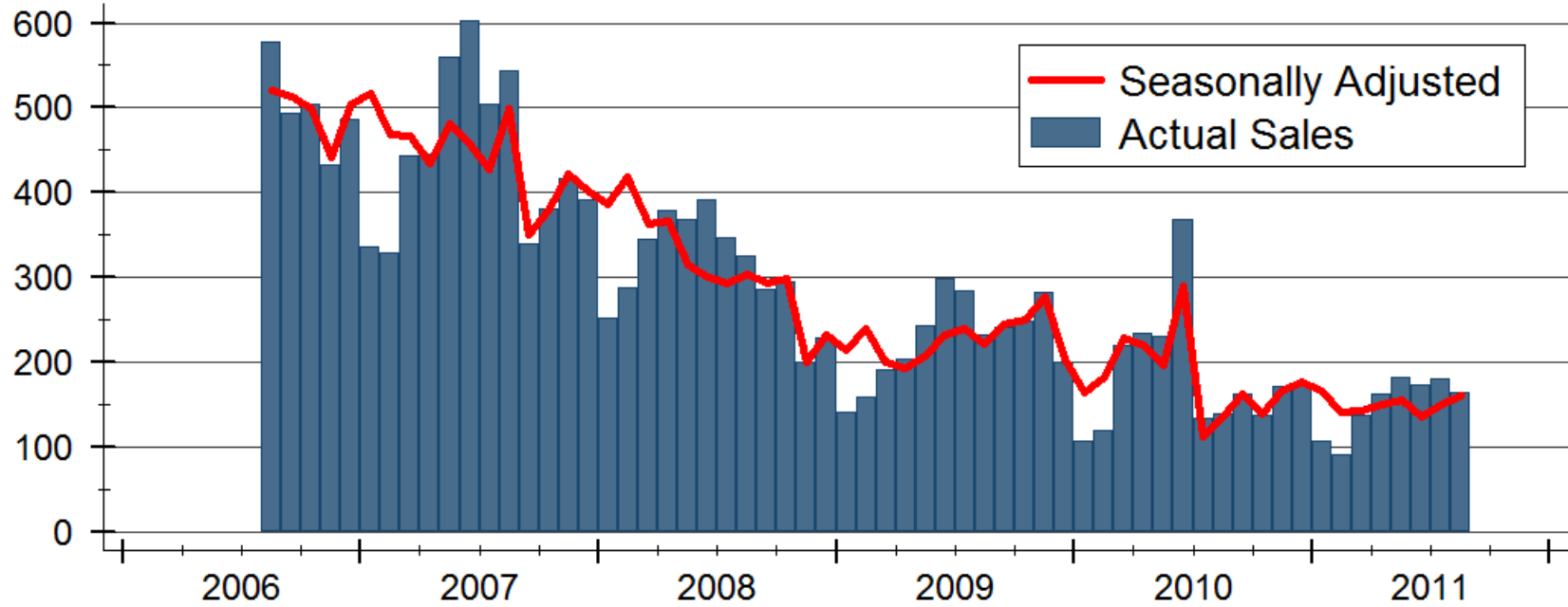


Source: Participating Kansas REALTOR® MLS systems

Prepared for the Kansas Association of REALTORS® by WSU Center for Real Estate on 9/21/2011

## Kansas New Home Sales

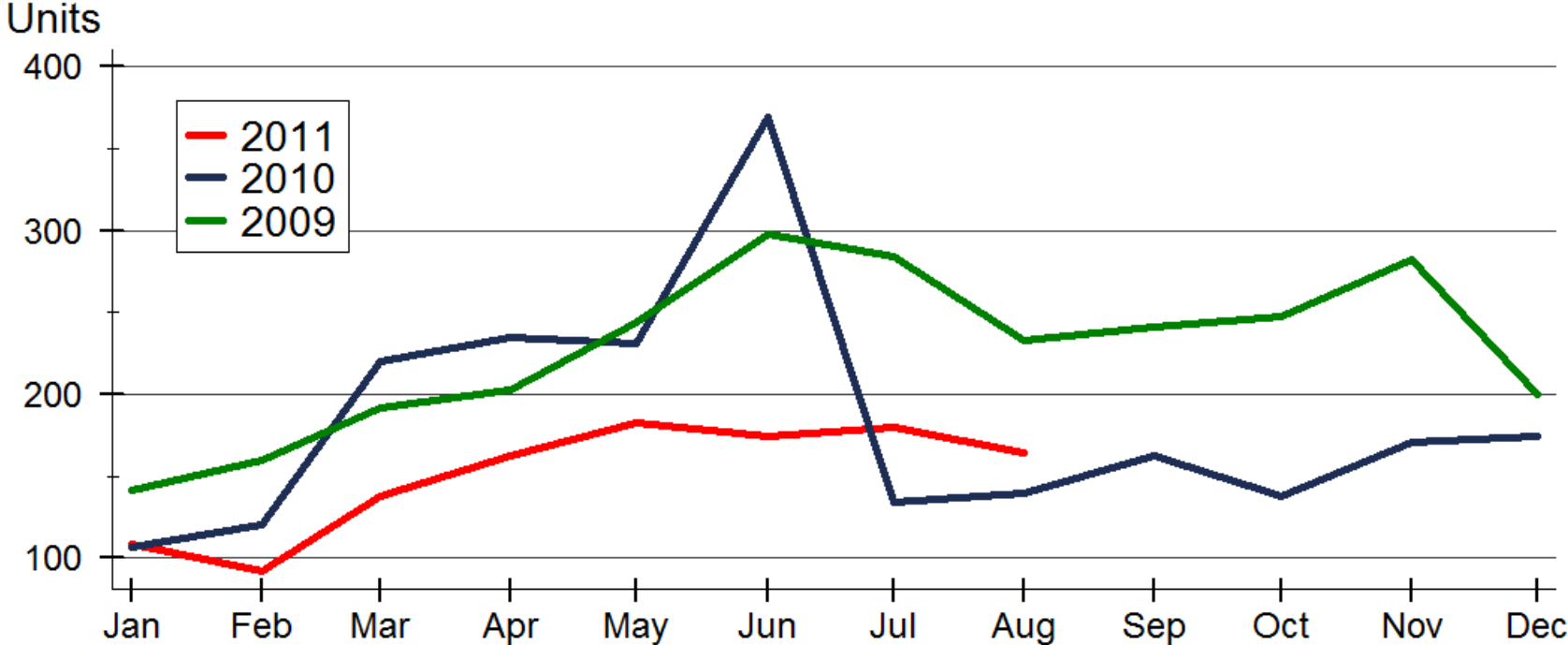
Units



Source: Participating Kansas REALTOR® MLS systems

Prepared for the Kansas Association of REALTORS® by WSU Center for Real Estate on 9/21/2011

### New Home Sales in Kansas by Month

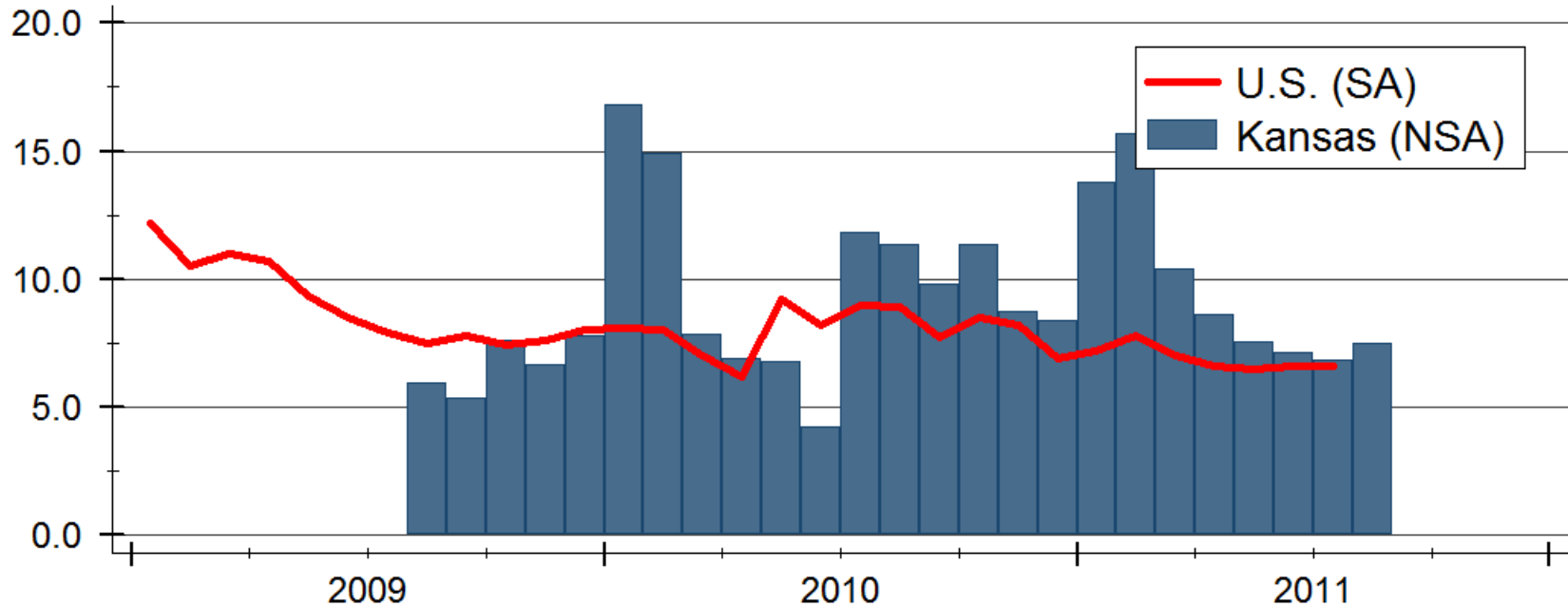


Source: Participating Kansas REALTOR® MLS systems

Prepared for the Kansas Association of REALTORS® by WSU Center for Real Estate on 9/21/2011

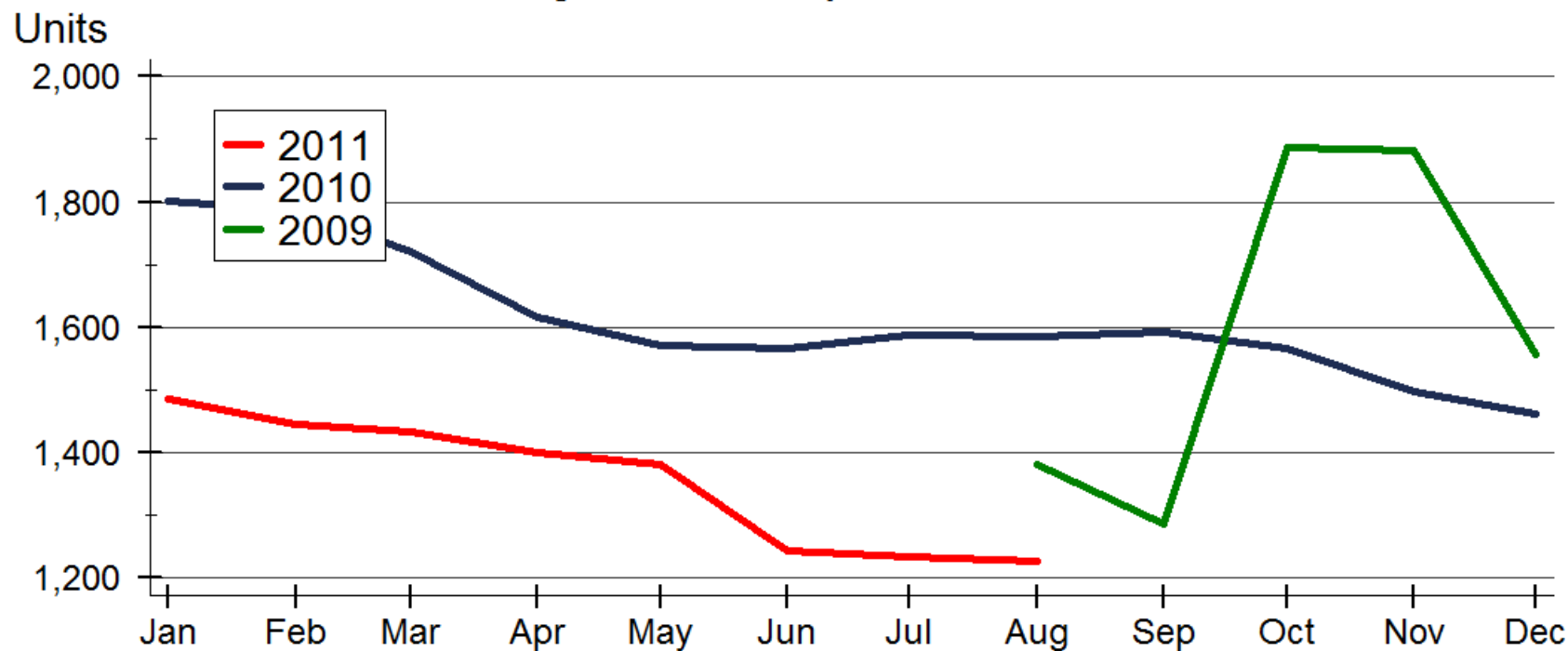
## New Home Inventories

Months' Supply



Sources: U.S. Bureau of the Census and participating Kansas REALTOR® MLS systems  
Prepared for the Kansas Association of REALTORS® by WSU Center for Real Estate on 9/21/2011

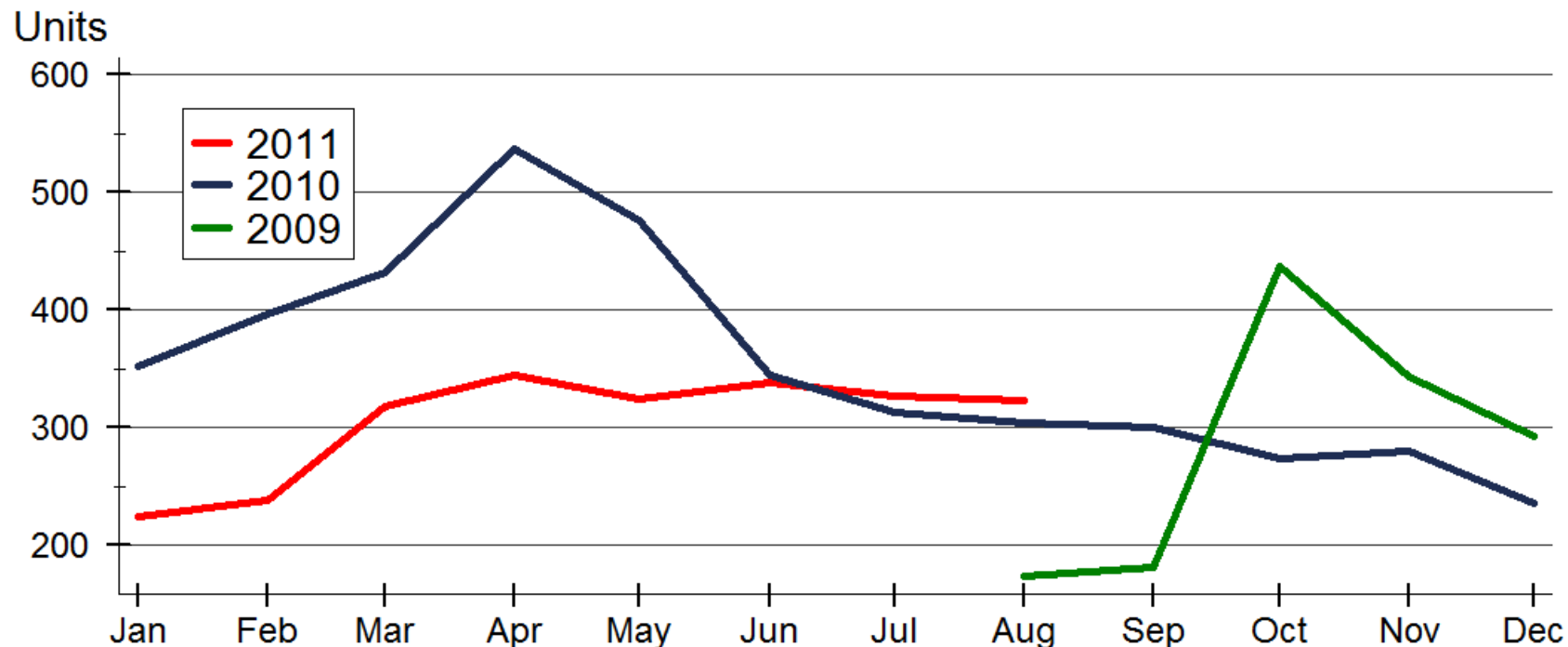
### Active Listings in Kansas by Month - New Homes



Source: Participating Kansas REALTOR® MLS systems

Prepared for the Kansas Association of REALTORS® by WSU Center for Real Estate on 9/21/2011

### Pending Home Sales in Kansas by Month - New Homes



Source: Participating Kansas REALTOR® MLS systems

Prepared for the Kansas Association of REALTORS® by WSU Center for Real Estate on 9/21/2011