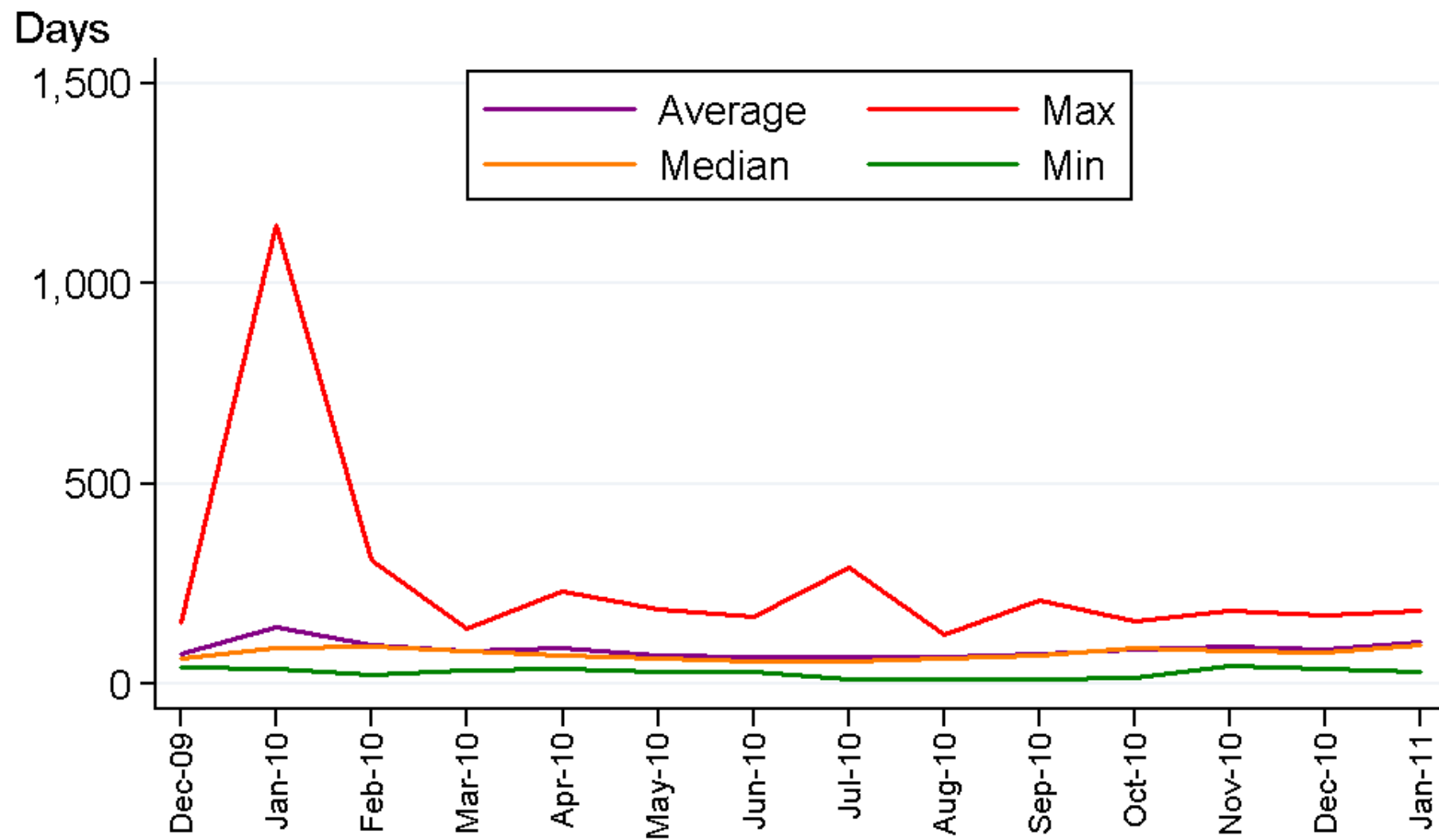


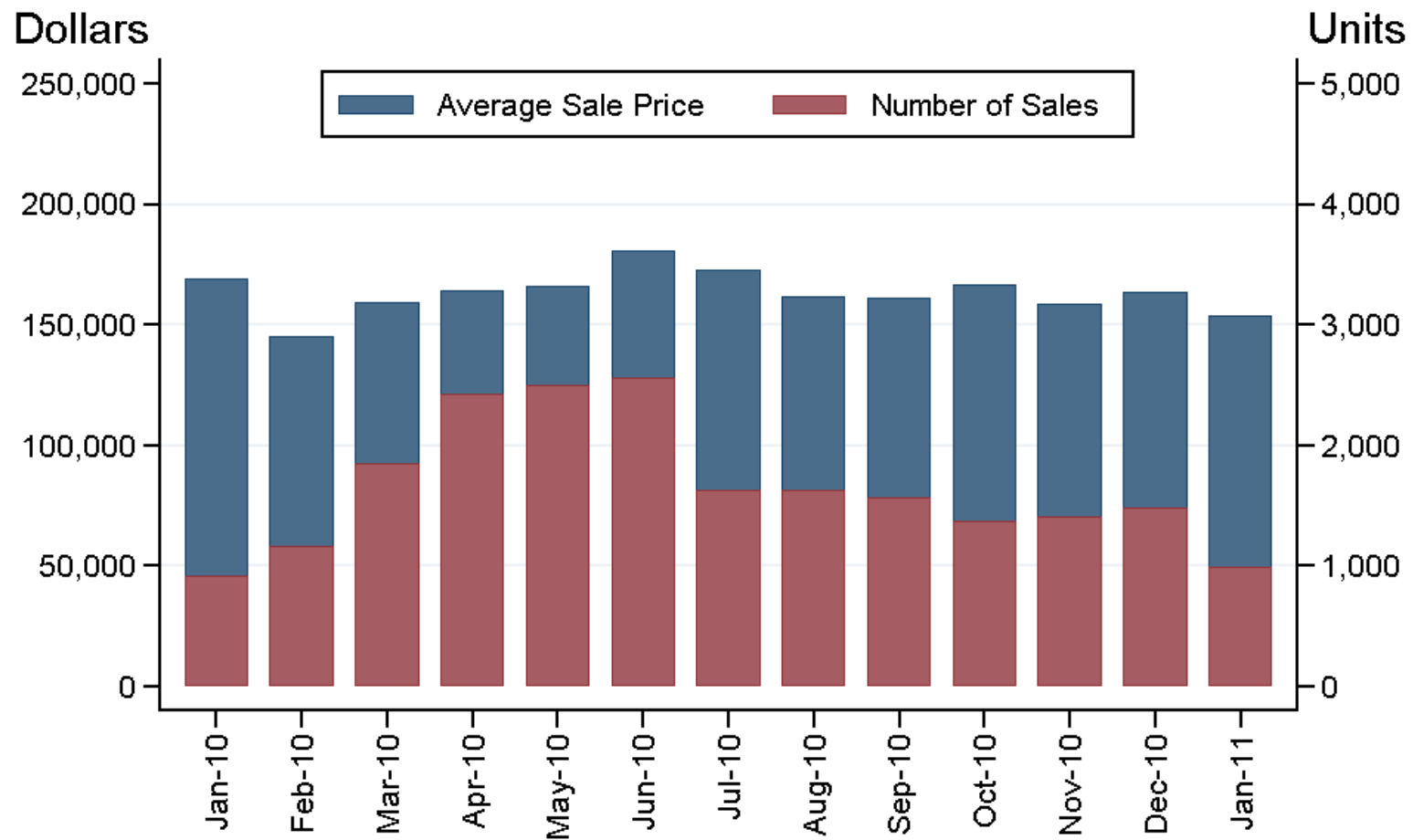
## Kansas Home Sales Median Days on Market across MLS Systems



Sources: Participating Kansas REALTOR® MLS systems

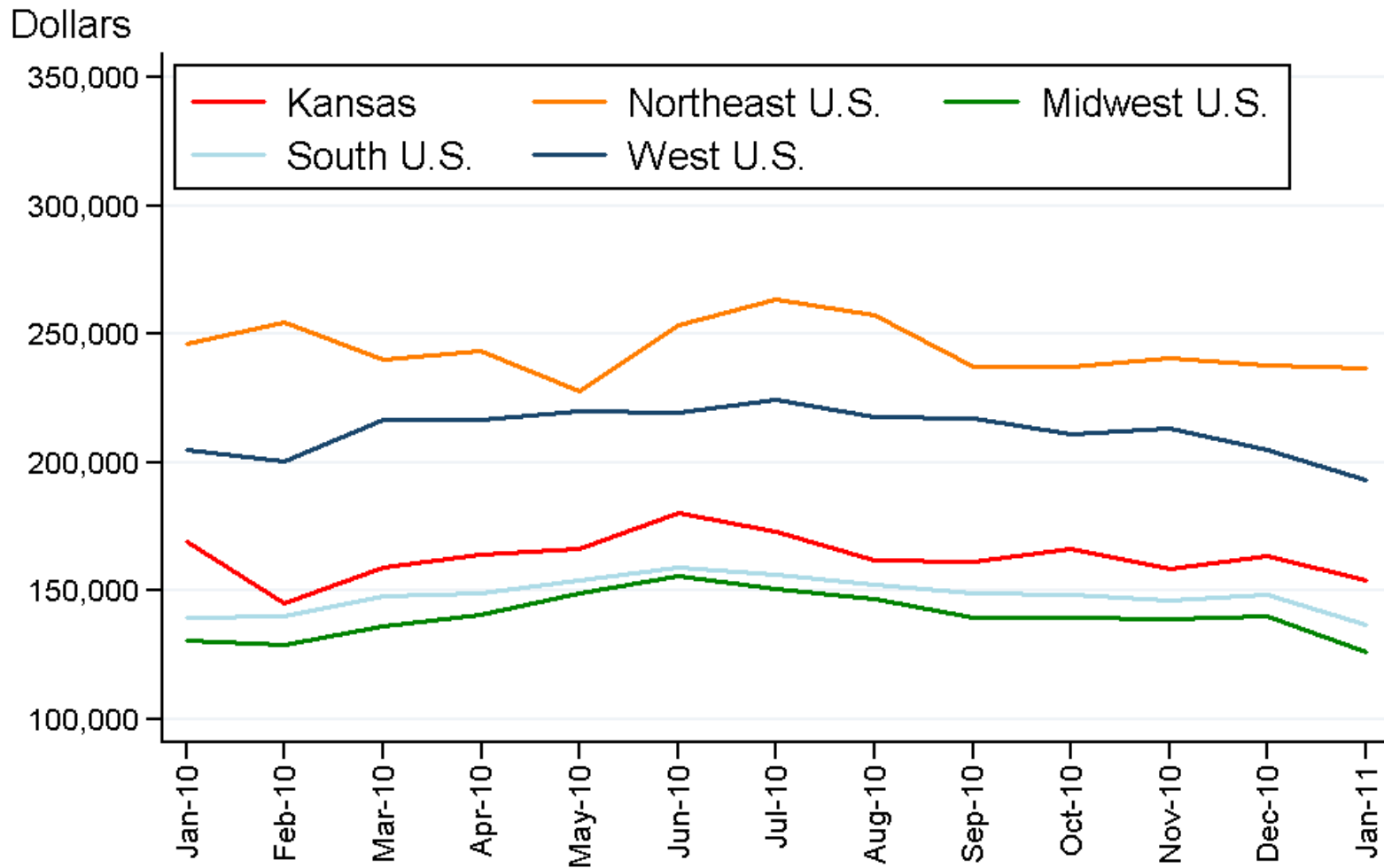
Prepared for the Kansas Association of REALTORS® by WSU Center for Real Estate on 2/24/2011

## Kansas Home Sales Activity January 2011



Sources: Participating Kansas REALTOR® MLS systems  
 Prepared for the Kansas Association of REALTORS® by WSU Center for Real Estate on 2/24/2011

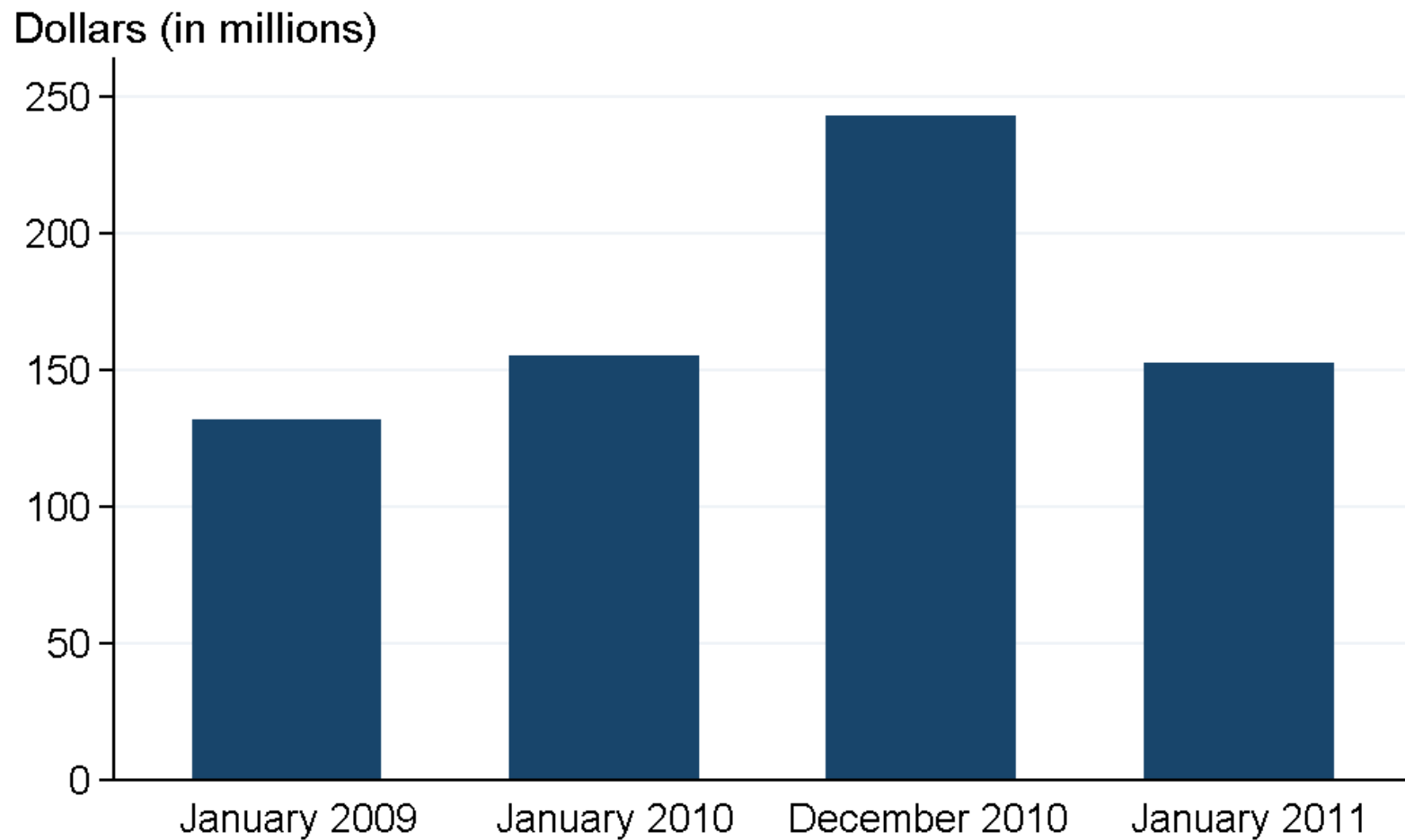
# Median Sale Price of Homes Sold through January 2011



Sources: NAR and participating Kansas REALTOR® MLS systems

Prepared for the Kansas Association of REALTORS® by WSU Center for Real Estate on 2/24/2011

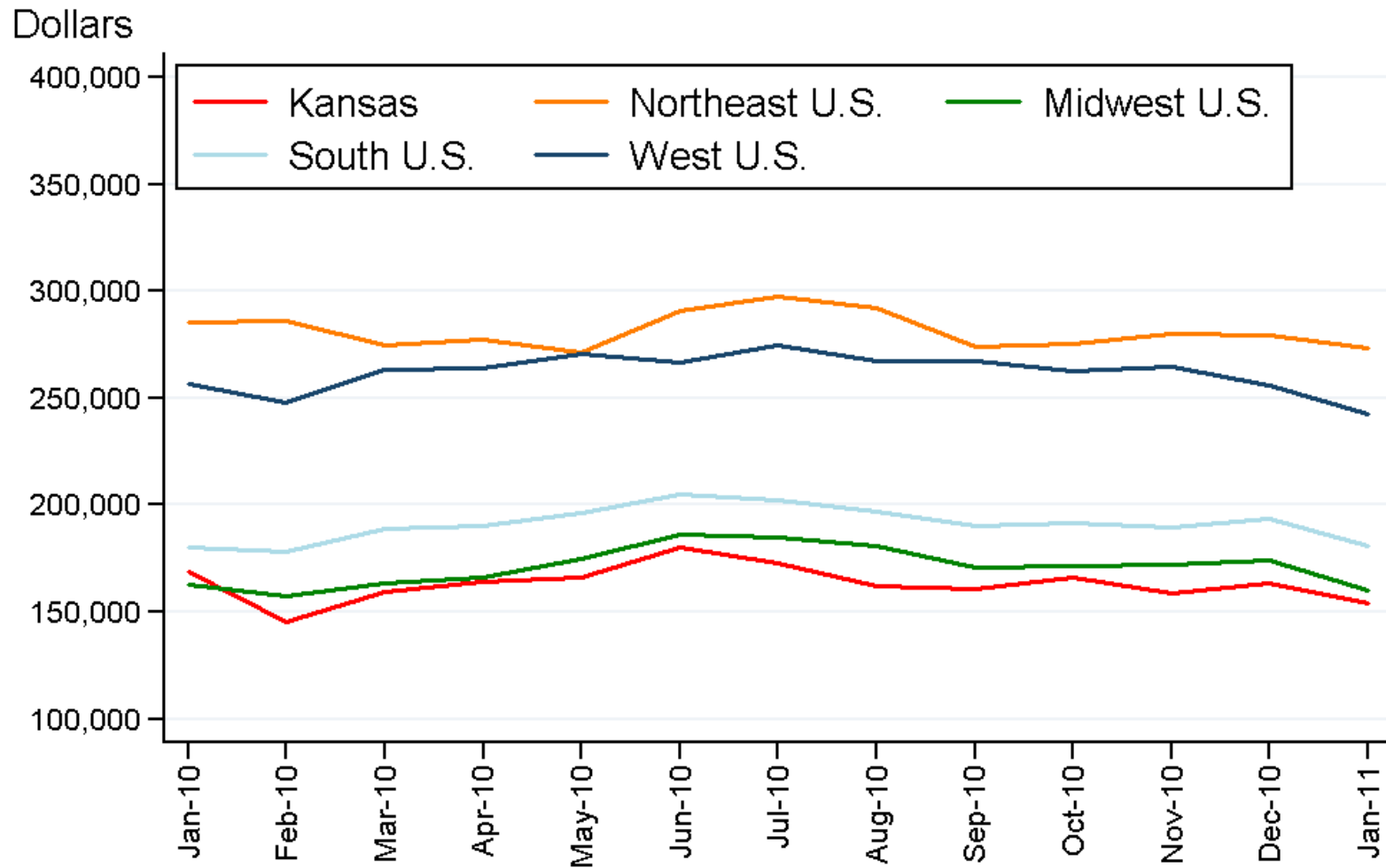
## Kansas Home Sales Activity Volume in Millions



Sources: Participating Kansas REALTOR® MLS systems

Prepared for the Kansas Association of REALTORS® by WSU Center for Real Estate on 2/24/2011

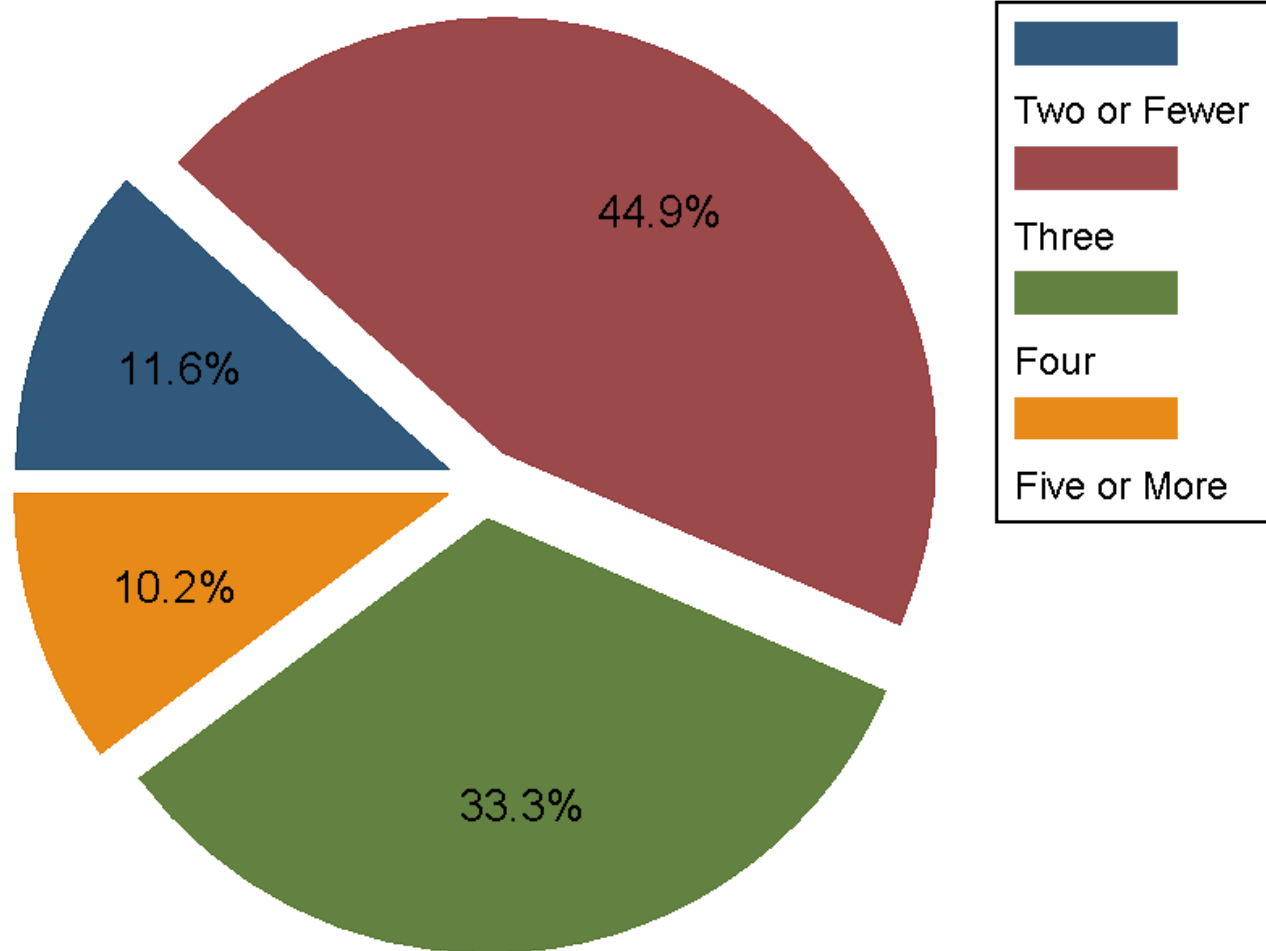
# Average Sale Price of Homes Sold through January 2011



Sources: NAR and participating Kansas REALTOR® MLS systems

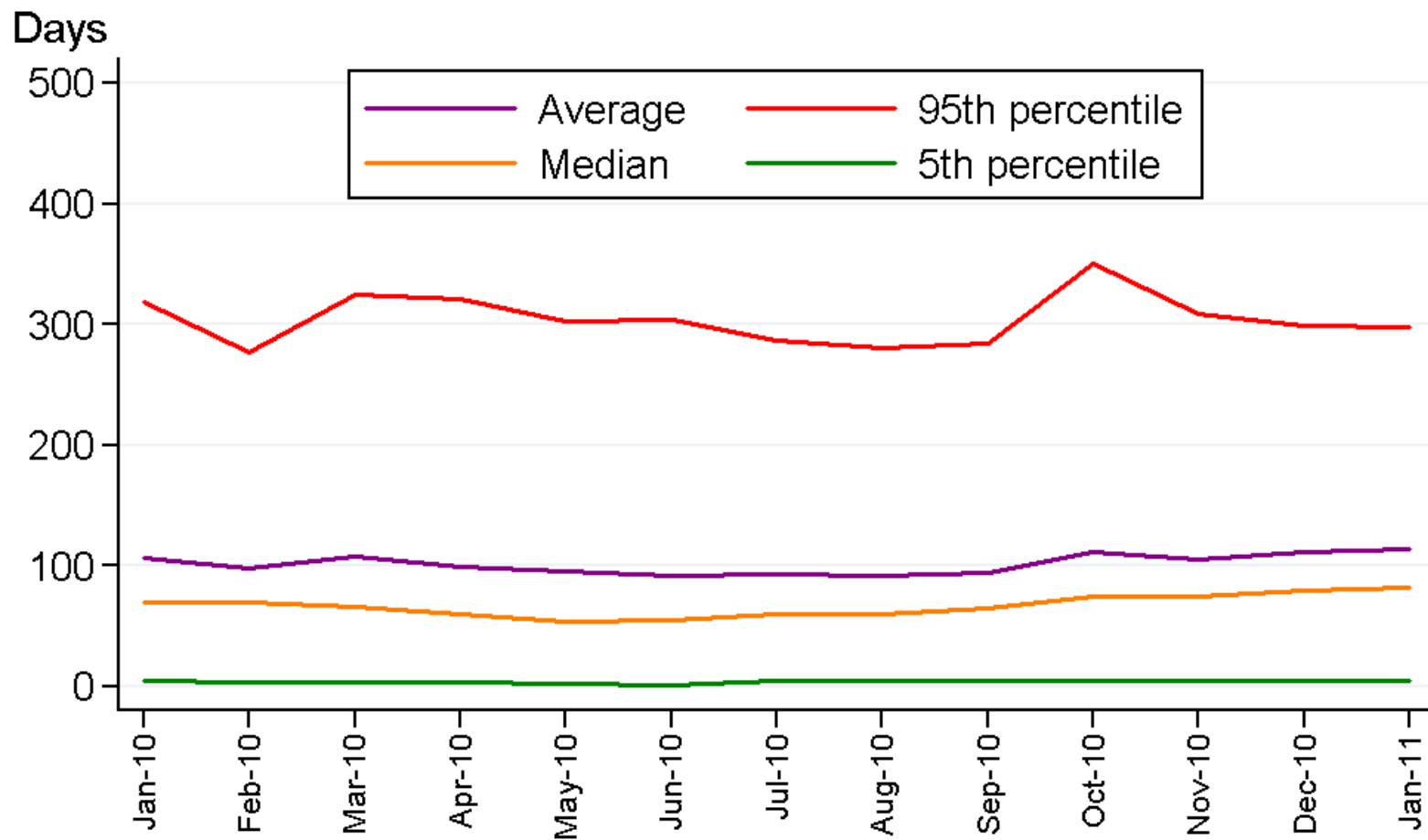
Prepared for the Kansas Association of REALTORS® by WSU Center for Real Estate on 2/24/2011

## January 2011 Kansas Home Sales by Number of Bedrooms



Sources: Participating Kansas REALTOR® MLS systems  
Prepared for the Kansas Association of REALTORS® by WSU Center for Real Estate on 2/24/2011

## Kansas Home Sales Days on the Market



Sources: Participating Kansas REALTOR® MLS systems

Prepared for the Kansas Association of REALTORS® by WSU Center for Real Estate on 2/24/2011

## 2011 Kansas Market Statistics with Year Over Year Comparison

	<u>Sales</u>	<u>Average Price</u>	<u>% of List Price</u>	<u>DOM</u>	<u>Active Listings</u>	<u>Months Supply</u>	<u>Pending Sales</u>
January '11	1237	\$146,513	95.40%	113	17,805	13.3	2,286
2010	5.60%	-8.10%	-0.9%	6.60%	+12.7%	+6.4%	-8.7%
2009	-0.7%	4.70%	-0.5%	3.70%	N/A	N/A	N/A
February	1611	\$143,109	96%	98	16,657	10.8	N/A
	-7.10%	-1.60%	0.20%	-5.80%			
March	2375	\$154,559	96.40%	104	18,049	7.6	N/A
	5.80%	6.30%	-1.40%	-3.70%			
April	3,242	\$155,670	97.20%	99	18,459	5.7	N/A
	42.50%	2.30%	0.30%	3.10%			
May	3,355	\$157,822	98.60%	94	18,801	5.6	N/A
	22.60%	-2.50%	0.10%	-7.80%			
June	3,359	\$169,402	97.10%	93	19,213	5.7	N/A
	1%	0.60%	-0.10%	-1.10%			
July	2,155	\$164,744	96.70%	93	19,768	9.2	N/A
	-35.70%	-8.50%	-0.50%	-1%			
August	2,180	\$156,000	96.30%	91	20,588	9.4	2,639
	-24.30%	-0.08%	-0.70%	-2.20%	23.50%		-18.40%
September	2138	\$151,383	95.90%	95	21,148	9.9	2,618
	-22.70%	0.40%	-0.90%	-7.80%	25.20%		-17.10%
October	1896	\$157,461	95.80%	112	21,199	11.2	2607
	-35.70%	2.40%	-1.30%	14%	26.60%		-38.00%
November	1,933	\$153,705	96.20%	105	18,511	9.6	2,446
2009	-32.50%	-0.4%	-0.7%	9.40%	13.30%	68.40%	-25.10%
2008	7.20%	2.2%	0.7%	2.90%	N/A	N/A	N/A
December	2,032	\$ 158,628	95.9%	111	17,885	8.8	2006
2009	0	4%	0%	9%	19%	9%	0%
2008	3.00%	6.0%	0.0%	14.40%	N/A	N/A	N/A